

|   |                        |   |             |
|---|------------------------|---|-------------|
| WAAAS<br>CH <b>87013</b><br><b>W18A</b> | APP CRS<br><b>177°</b> | Rwy ldg<br>TDZE <b>213</b><br>Apt Elev <b>213</b> | <b>5500</b> |
|---|------------------------|---|-------------|

# RNAV (GPS) RWY 18

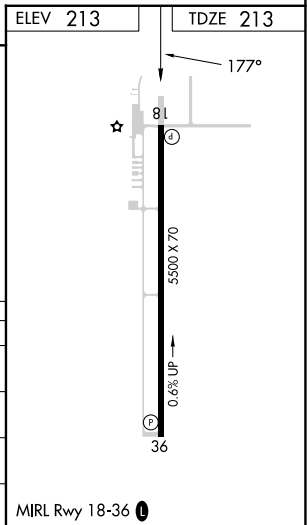
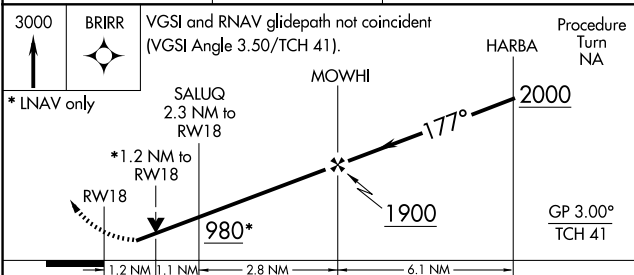
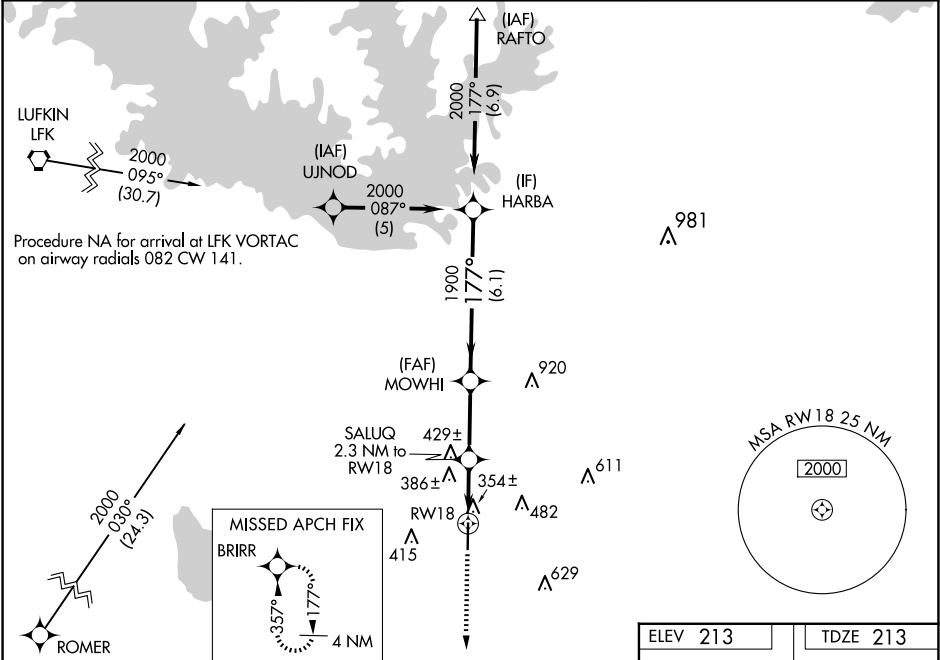
JASPER COUNTY/BELL FLD (JAS)

RNP APCH-GPS.

▼ Baro-VNAV NA when using De Ridder altimeter setting. For uncompensated Baro-VNAV systems, LNAV/VNAV NA below -15°C or above 54°C. Rwy 18 helicopter visibility reduction below ¼ SM NA. VDP NA when using De Ridder altimeter setting. When local altimeter setting not received, use De Ridder altimeter setting and increase LPV DA to 654 feet and all visibilities ¾ SM. Increase LNAV/VNAV DA to 817 feet and all visibilities ¾ SM. Increase all MDAs 100 feet and LNAV visibility Cat C ½ SM, and Circling visibility Cat C ½ SM.

MISSED APPROACH:  
Climb to 3000  
direct BRIRR  
and hold.

|                          |  |  |
|--------------------------|--|--|
| AWOS-3<br><b>118.375</b> | HOUSTON CENTER<br><b>126.95 363.05</b> | UNICOM<br><b>122.8</b> (CTAF) <b>0</b> |
|--------------------------|--|--|



| CATEGORY     | A                 | B                         | C | D  |
|--------------|-------------------|---------------------------|---|----|
| LPV DA       | 567-1             | 354 (400-1)               |   | NA |
| LNAV/VNAV DA | 730-1 3/8         | 517 (600-1 3/8)           |   | NA |
| LNAV MDA     | 700-1 487 (500-1) | 700-1 3/8 487 (500-1 3/8) |   | NA |
| CIRCLING     | 740-1 527 (600-1) | 800-1 1/2 587 (600-1 1/2) |   | NA |

MIRL Rwy 18-36 **0**