

WAAS CH 56525 W14A	APP CRS 136°	Rwy Ldg TDZE Apt Elev	5310 4168 4176
--	------------------------	-----------------------------	---

RNAV (GPS) RWY 14

MONDELL FLD (ECS)

RNP APCH.

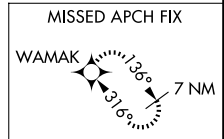
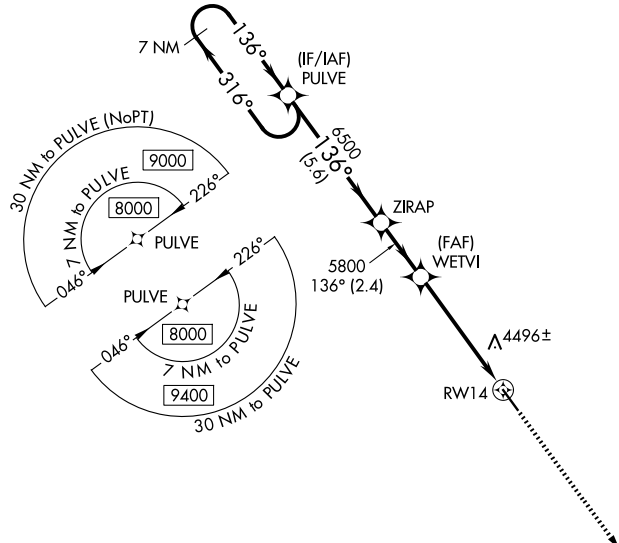
▼ When Newcastle altimeter setting not received, procedure NA.
▲ For uncompensated Baro-VNAV systems, LNAV/VNAV NA below -23°C (-9°F) or above 53°C (128°F). Rwy 14 helicopter visibility reduction below 3/4 SM NA. Circling NA northeast of Rwy 14-32.

MISSED APPROACH: Climb to 9400 direct WAMAK and hold, continue climb-in-hold to 9400.

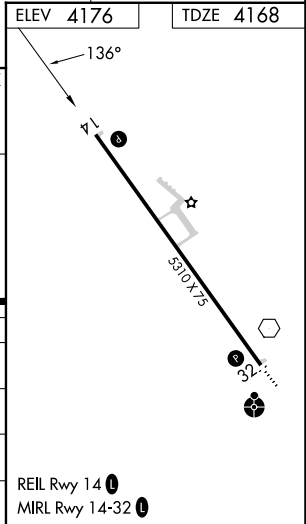
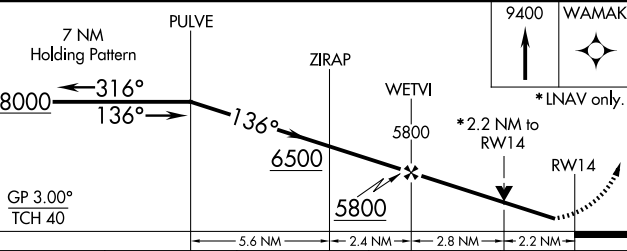
AWOS-3PT
118.0

DENVER CENTER
127.95 338.2

UNICOM
122.8 (CTAF) 0



ELEV 4176 TDZE 4168



CATEGORY	A	B	C	D
LPV DA	4418-1 250 (300-1)			
LNAV/VNAV DA	4846-2½ 678 (700-2½)			
LNAV MDA	4920-1 752 (800-1)	4920-1¼ 752 (800-1¼)	4920-2 752 (800-2)	
CIRCLING	4920-1 744 (800-1)	4920-1¼ 744 (800-1¼)	4920-2¼ 744 (800-2¼)	5000-2¾ 824 (900-2¾)

REIL Rwy 14 0
MIRL Rwy 14-32 0

NW-1, 14 MAY 2026 to 11 JUN 2026

NW-1, 14 MAY 2026 to 11 JUN 2026