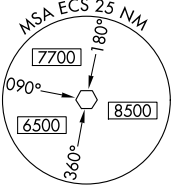
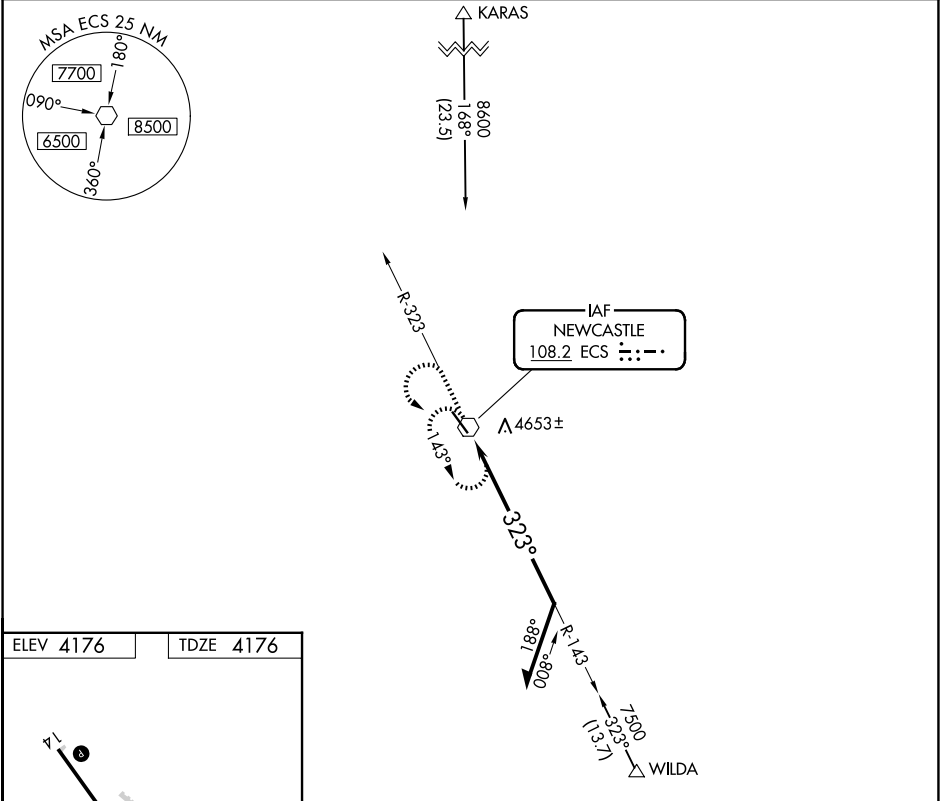


VOR ECS 108.2	APP CRS 323°	Rwy Ldg TDZE Apt Elev	5310 4176 4176
-------------------------	------------------------	-----------------------------	---

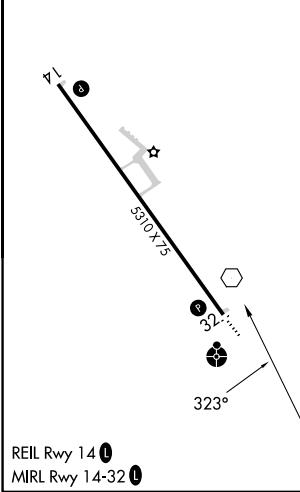
VOR RWY 32
MONDELL FLD (ECS)

<p>⚠ When Newcastle altimeter setting not received, procedure NA. Circling NA northeast of Rwy 14-32.</p>	<p>ODALS </p>	<p>MISSED APPROACH: Climb to 6700 on ECS VOR R-323 then climbing left turn to 7500 direct ECS VOR and hold, continue climb-in-hold to 7500.</p>
--	--------------------------	--

AWOS-3PT 118.0	DENVER CENTER 127.95 338.2	UNICOM 122.8 (CTAF) 0
--------------------------	--------------------------------------	---------------------------------



ELEV 4176	TDZE 4176
-----------	-----------



6700 ↑ ECS R-323	7500 ↙ ECS	6800 ECS VOR	Remain within 10 NM
		143°	6400
		323°	

CATEGORY	A	B	C	D
S-32	4980-3/4 804 (900-3/4)	4980-1 804 (900-1)	4980-2 1/2	804 (900-2 1/2)
CIRCLING	4980-1 804 (900-1)	4980-1 1/4 804 (900-1 1/4)	4980-2 1/2 804 (900-2 1/2)	5000-2 3/4 824 (900-2 3/4)

NW-1, 14 MAY 2026 to 11 JUN 2026

NW-1, 14 MAY 2026 to 11 JUN 2026