

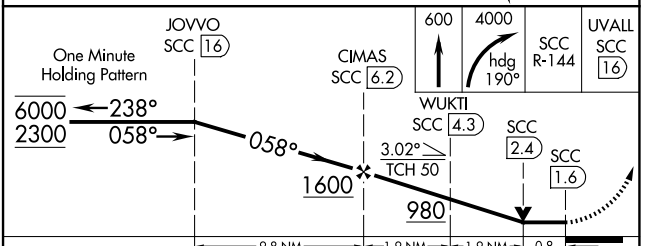
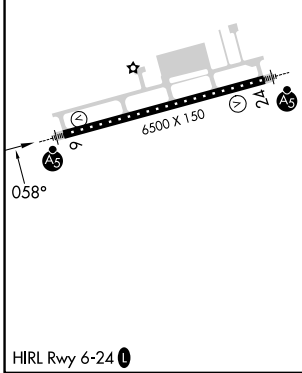
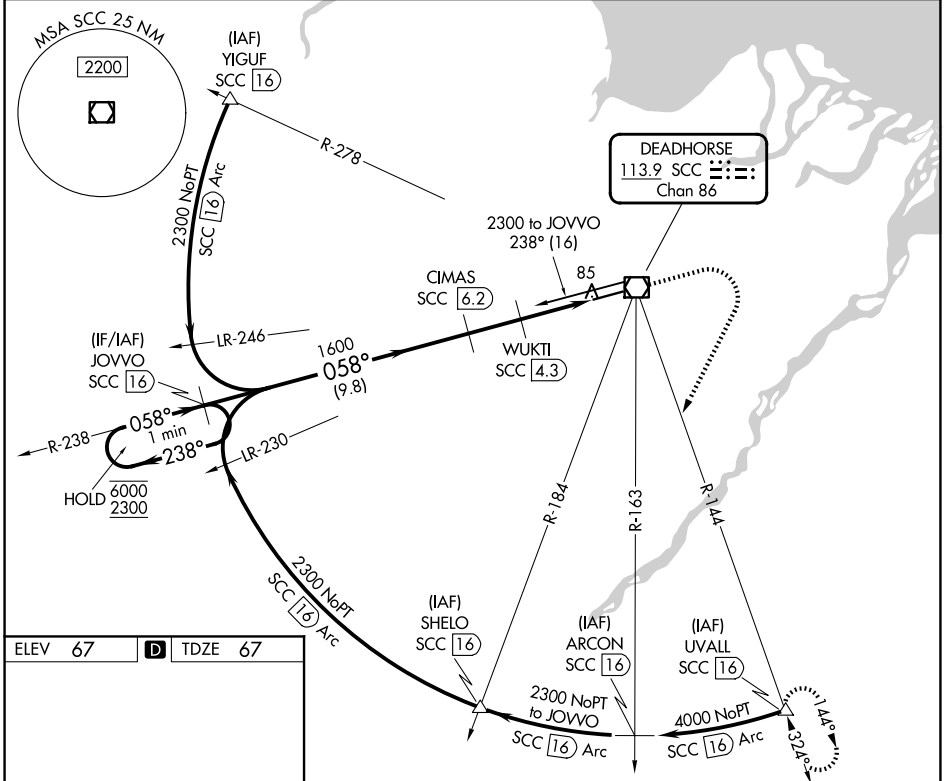
VOR/DME SCC	APP CRS	Rwy Ldg TDZE	6500
113.9	058°	Apt Elev	67
Chan 86			

VOR RWY 6

DEADHORSE (SCC) (PASC)

DME required.	MALSR	MISSED APPROACH: Climb to 600 then climbing right turn to 4000 and heading 190° and SCC VOR/DME R-144 to UVALL/SCC 16 DME and hold, continue climb-in-hold to 4000.
For inop ALS, increase S-6 Cats C/D/E to RVR 4500.		

AFIS 118.4	ANCHORAGE CENTER 134.4 370.9	DEADHORSE RADIO 123.6 (CTAF) 0
-------------------	-------------------------------------	---------------------------------------



CATEGORY	A	B	C	D	E
S-6	380/24 313 (400-½)				
CIRCLING	540-1	473 (500-1)	580-1½ 513 (600-1½)	620-2	553 (600-2)

AK, 14 MAY 2026 to 09 JUL 2026

AK, 14 MAY 2026 to 09 JUL 2026