

DEADHORSE, ALASKA

AL-5776 (FAA)

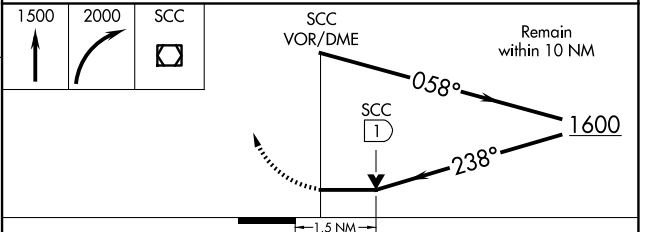
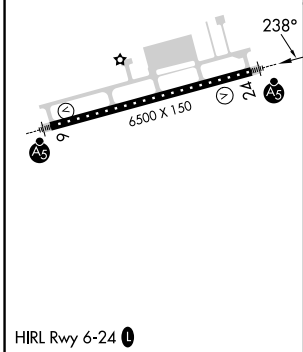
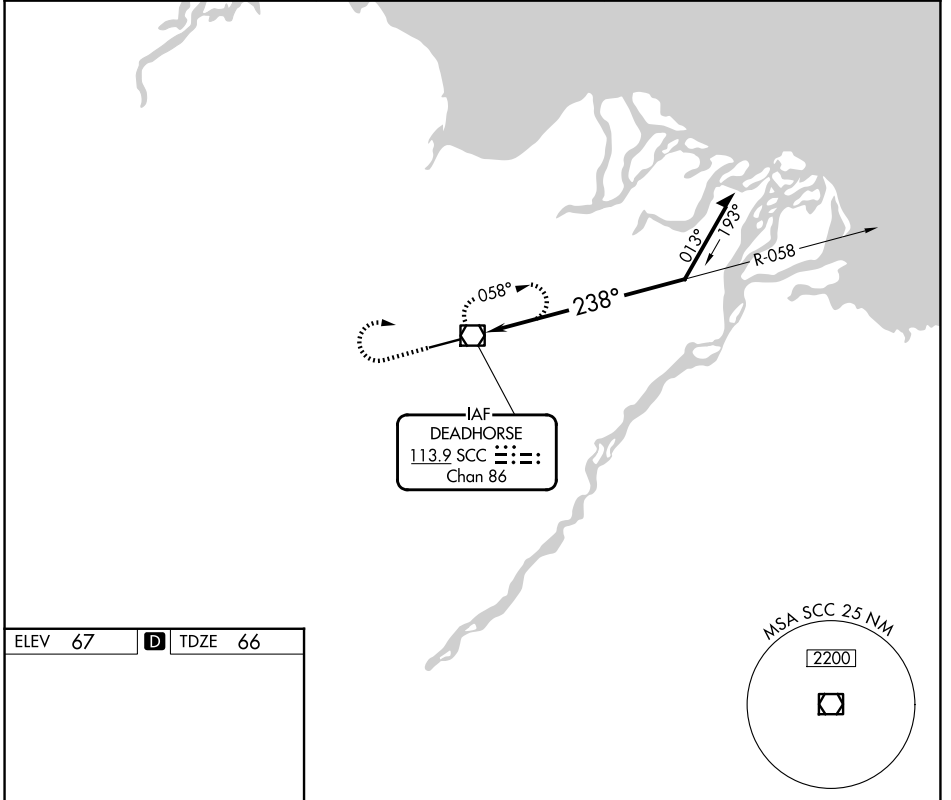
25331

VOR/DME SCC	APP CRS	Rwy Ldg	6500
113.9	238°	TDZE	66
Chan 86		Apt Elev	67

VOR Y RWY 24

DEADHORSE (SCC) (PASC)

	MALSR 		MISSED APPROACH: Climb to 1500 then climbing right turn to 2000 direct SCC VOR/DME and hold, continue climb-in-hold to 2000.
	AFIS 118.4	ANCHORAGE CENTER 134.4 370.9	DEADHORSE RADIO 123.6 (CTAF)



CATEGORY	A	B	C	D
S-24	580/24	514 (600-½)	580/55	514 (600-1)
CIRCLING	580-1	513 (600-1)	580-1½ 513 (600-1½)	620-2 553 (600-2)

DEADHORSE, ALASKA
 Amdt 6B 12OCT17

70°12'N-148°28'W

DEADHORSE (SCC) (PASC)

VOR Y RWY 24

AK, 14 MAY 2026 to 09 JUL 2026

AK, 14 MAY 2026 to 09 JUL 2026