

WAAS CH 53739 W21A	APP CRS 210°	Rwy Ldg TDZE Apt Elev	5501 668 671
--	------------------------	-----------------------------	---

RNAV (GPS) RWY 21

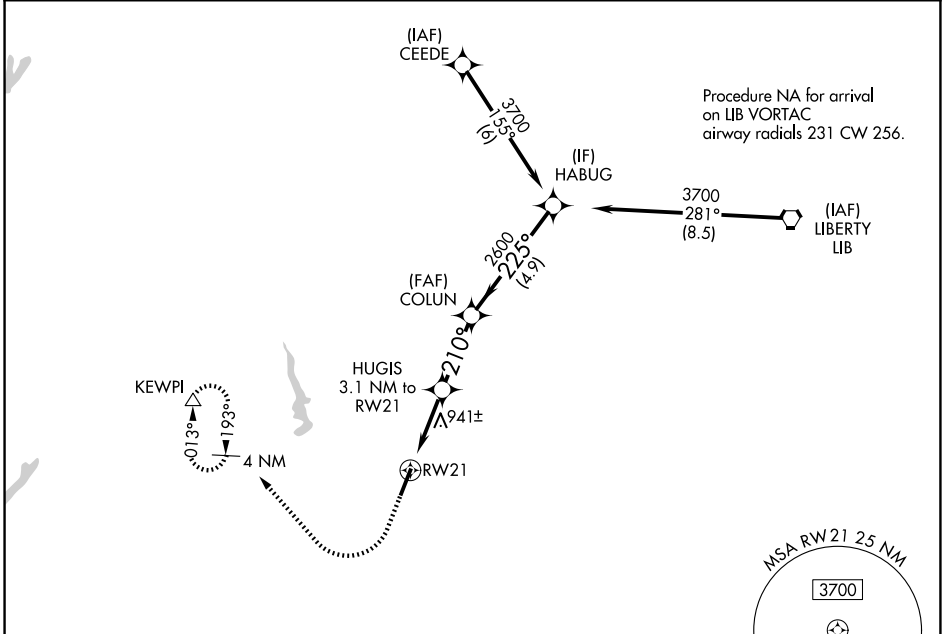
ASHEBORO RGNL (HBI)

RNP APCH-GPS.

⚠ For uncompensated Baro-VNAV systems, LNAV/VNAV NA below -16°C (4°F) or above 54°C (130°F). Rwy 21 helicopter visibility reduction below 3/4 SM NA.

MISSED APPROACH: Climb to 3000 then right turn direct KEWPI and hold.

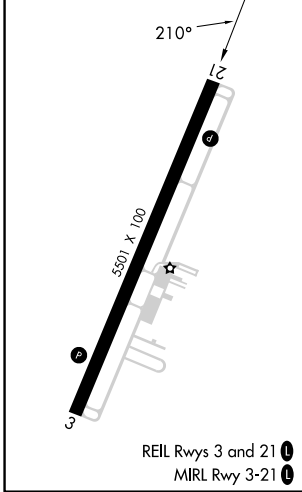
AWOS-3 119.275	GREENSBORO APP CON 126.6 327.075	UNICOM 122.8 (CTAF) 0
--------------------------	--	---------------------------------



SE-2, 14 MAY 2026 to 11 JUN 2026

SE-2, 14 MAY 2026 to 11 JUN 2026

ELEV 671	TDZE 668
----------	----------



3000	↑	KEWPI	△	HABUG	3700
*LNAV only.		HUGIS 3.1 NM to RWY 21	COLUN 2600	225°	GP 3.00° TCH 40
		*1.6 NM to RWY 21	*1680	2600	
		1.6 NM	1.5 NM	2.8 NM	4.9 NM
CATEGORY	A	B	C	D	
LPV DA		918-3/4	250 (300-3/4)		
LNAV/VNAV DA		1069-1/8	401 (400-1/8)		
LNAV MDA	1220-1	552 (600-1)	1220-15/8	552 (600-15/8)	
CIRCLING	1300-1 629 (700-1)	1360-1 689 (700-1)	1680-3	1009 (1100-3)	