

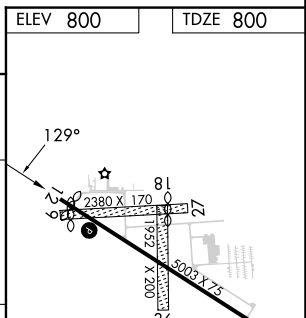
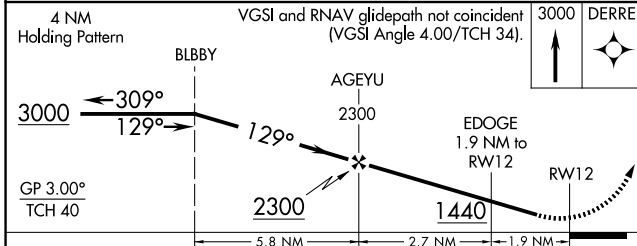
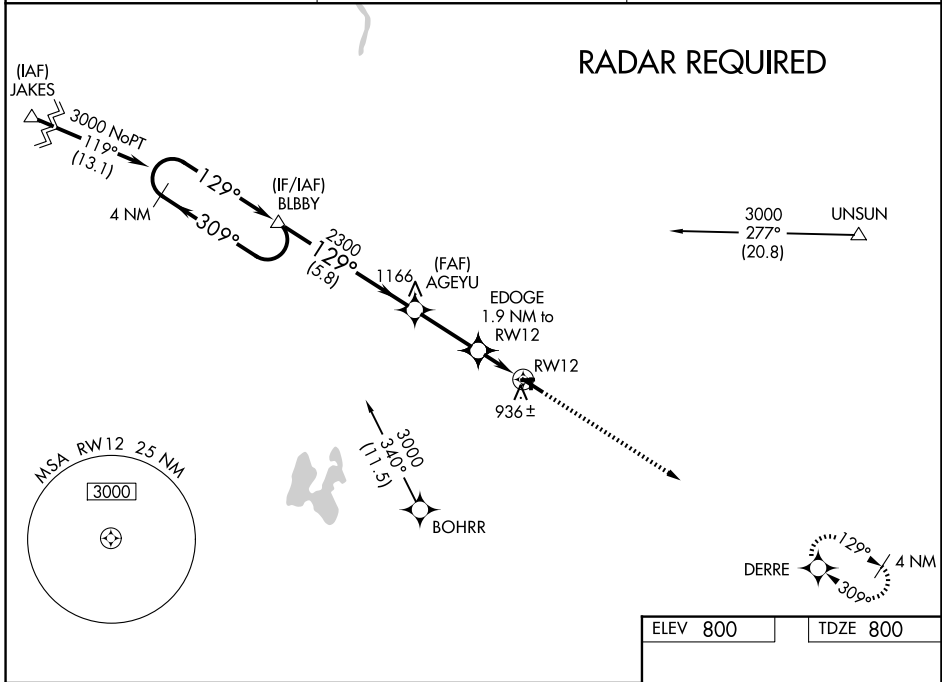
WAAS CH 53326 W12A	APP CRS 129°	Rwy Ldg 4762 TDZE 800 Apt Elev 800
--	------------------------	---

RNAV (GPS) RWY 12

HASTINGS (9D9)

RNP APCH - GPS.		MISSED APPROACH: Climb to 3000 direct DERRE and hold.
<p>▼ Circling NA to Rwy 9, 18, 27 and 36. Baro-VNAV NA. Use GRR altimeter setting; when not received, use Y70 altimeter setting; increase LPV DA to 1102 feet; increase LNAV/VNAV DA to 1260 feet and all visibilities 1/8 SM; increase all MDA 20 feet, and LNAV visibility Cat C 1/8 SM. Rwy 12 helicopter visibility reduction below 3/4 SM NA.</p> <p>▲ NA</p>		

GRR ASOS 118.725	GREAT LAKES APP CON * 128.4 257.6	UNICOM 123.075 (CTAF) 0
----------------------------	---	-----------------------------------



CATEGORY	A	B	C	D
LPV DA	1087-1 287 (300-1)			NA
LNAV/VNAV DA	1245-1 3/8 445 (500-1 3/8)			NA
LNAV MDA	1240-1	440 (500-1)	1240-1 1/4 440 (500-1 1/4)	NA
CIRCLING	1380-1 580 (600-1)	1440-1 640 (700-1)	1440-1 3/4 640 (700-1 3/4)	NA

MIRL Rwy 12-30 0
REIL Rwy 12 and 30 0

EC-1, 14 MAY 2026 to 11 JUN 2026

EC-1, 14 MAY 2026 to 11 JUN 2026