

WAAS CH <b>86326</b> <b>W30A</b>	APP CRS <b>309°</b>	Rwy Ldg TDZE Apt Elev	<b>4752</b> <b>800</b> <b>800</b>
--	------------------------	-----------------------------	---

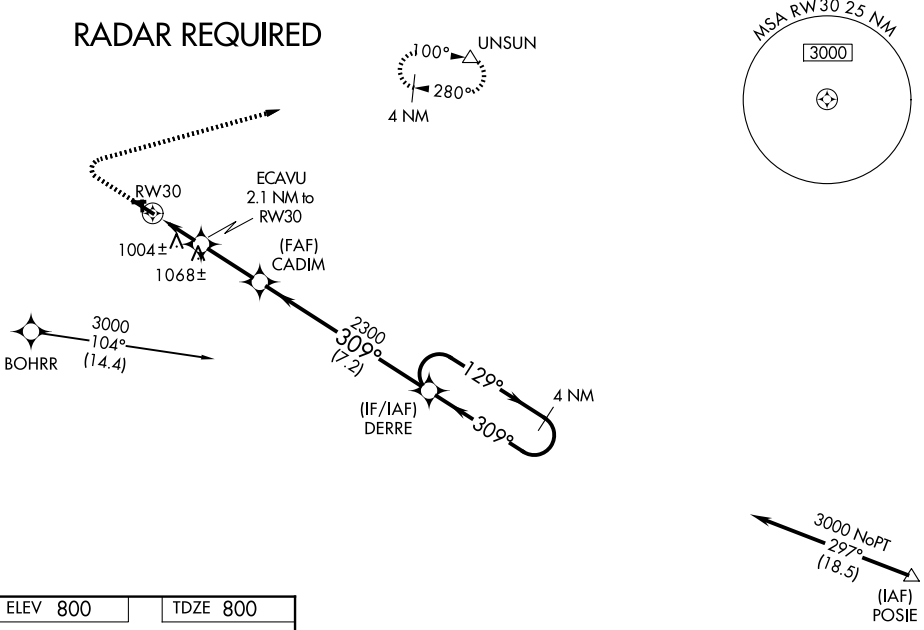
# RNAV (GPS) RWY 30

HASTINGS (9D9)

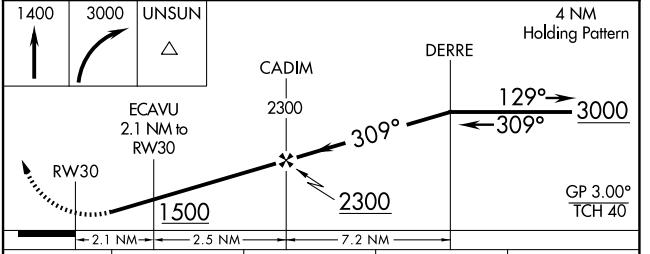
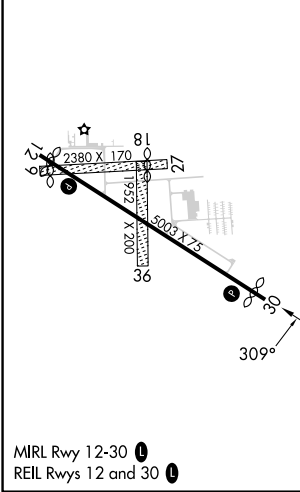
RNP APCH - GPS.	MISSED APPROACH: Climb to 1400 then climbing right turn to 3000 direct UNSUN and hold.
Circling NA to Rwy 9, 18, 27 and 36. Baro-VNAV NA. Use GRR altimeter setting; when not received, use Y70 altimeter setting: increase LPV DA to 1131 feet; increase LNAV/VNAV DA to 1377; increase all MDAs 20 feet. Rwy 30 helicopter visibility reduction below 3/4 SM NA.	

GRR ASOS <b>118.725</b>	GREAT LAKES APP CON ★ <b>128.4 257.6</b>	UNICOM <b>123.075</b> (CTAF)
----------------------------	---	---------------------------------

## RADAR REQUIRED



ELEV 800	TDZE 800
----------	----------



CATEGORY	A	B	C	D
LPV DA	1116-1 316 (400-1)			NA
LNAV/VNAV DA	1362-1 5/8 562 (600-1 5/8)			NA
LNAV MDA	1300-1	500 (500-1)	1300-1 3/8 500 (500-1 3/8)	NA
CIRCLING	1380-1 580 (600-1)	1440-1 640 (700-1)	1440-1 3/4 640 (700-1 3/4)	NA

EC-1, 14 MAY 2026 to 11 JUN 2026

EC-1, 14 MAY 2026 to 11 JUN 2026