

VOR/DME VIO 115.95 Chan 106 (Y)	APP CRS 142°	Rwy Ldg 4763 TDZE 800 Apt Elev 800
---	------------------------	---

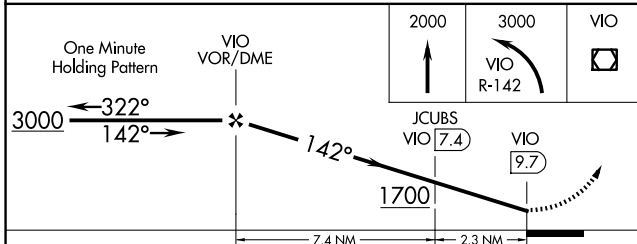
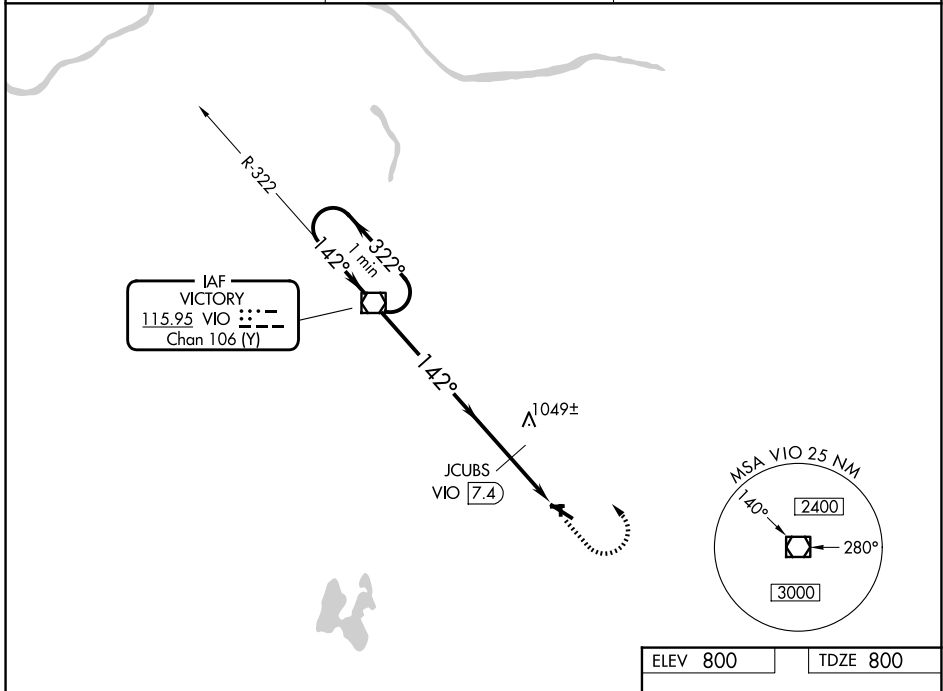
VOR RWY 12

HASTINGS (9D9)

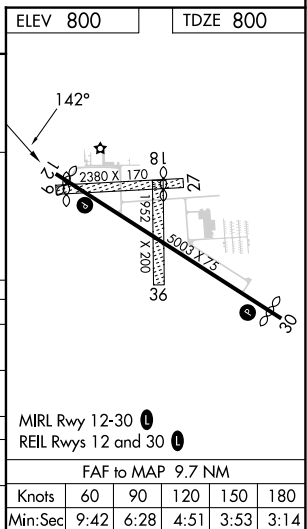
▼ Helicopter visibility reduction below 3/4 SM NA. Use GRR altimeter setting; when not received, use Y70 altimeter setting and increase all MDA 20 feet.
▲ NA Increase JCUBS DME minimums S-12 visibility 1/8 mile Cat C. Circling NA to Rwy 9, 18, 27, 36.

MISSED APPROACH: Climb to 2000, then climbing left turn to 3000 on VIO VOR/DME R-142 to VIO VOR/DME and hold.

GRR ASOS 118.725	GREAT LAKES APP CON * 128.4 257.6	UNICOM 123.075 (CTAF) 0
----------------------------	---	-----------------------------------



CATEGORY	A	B	C	D
S-12	1700-1 1/4	900 (900-1 1/4)	1700-2 1/2 900 (900-2 1/2)	NA
CIRCLING	1700-1 1/4	900 (900-1 1/4)	1700-2 3/4 900 (900-2 3/4)	NA
JCUBS DME MINIMUMS				
S-12	1340-1	540 (600-1)	1340-1 1/2 540 (600-1 1/2)	NA
CIRCLING	1380-1 580 (600-1)	1440-1 640 (700-1)	1440-1 3/4 640 (700-1 3/4)	NA



EC-1, 14 MAY 2026 to 11 JUN 2026

EC-1, 14 MAY 2026 to 11 JUN 2026

MIRL Rwy 12-30 0	REIL Rwys 12 and 30 0				
FAF to MAP 9.7 NM					
Knots	60	90	120	150	180
Min:Sec	9:42	6:28	4:51	3:53	3:14