

WAAS CH <b>86819</b> W15A	APP CRS <b>152°</b>	Rwy Idg 4001
		TDZE 730
		Apt Elev 730

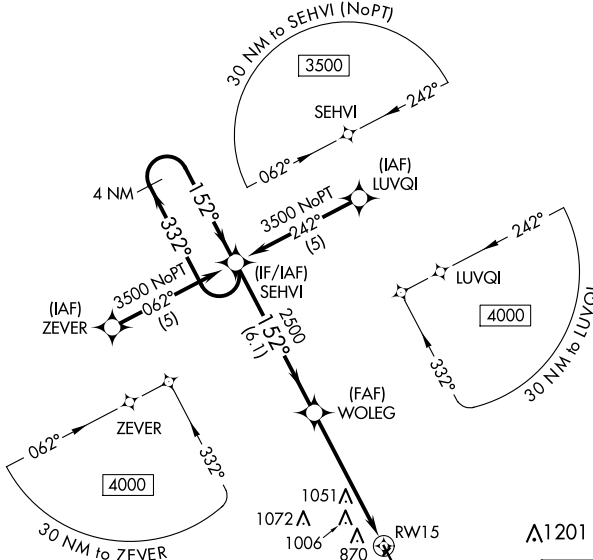
# RNAV (GPS) RWY 15

MOUNT PLEASANT MUNI (MPZ)

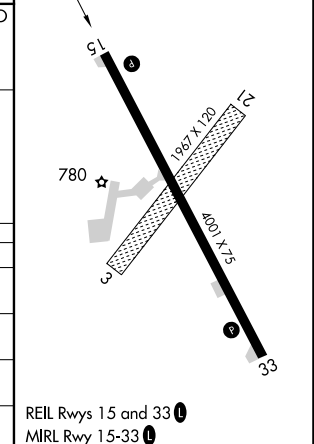
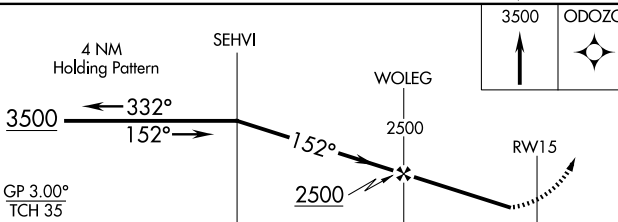
**⚠** Baro-VNAV NA when using Burlington altimeter setting. For uncompensated Baro-VNAV systems, LNAV/VNAV NA below -1.6°C (4°F) or above 54°C (130°F). DME/DME RNP-0.3 NA. Visibility reduction by helicopters NA. When VGSJ inoperative, straight-in minimums NA at night. When local altimeter setting not received, use Burlington altimeter setting: increase LPV DA to 1031 feet, LNAV/VNAV DA to 1394 feet and all LNAV/VNAV visibilities ¼ mile; increase all MDA 60 feet, increase LNAV and Circling Cat C visibility ¼ mile. Circling NA to Rwy 3/21.

**MISSED APPROACH:**  
Climb to 3500 direct ODOZO and hold.

AWOS-3 <b>119.325</b>	CHICAGO CENTER <b>135.6 316.1</b>	UNICOM <b>123.05 (CTAF) 0</b>
--------------------------	--------------------------------------	----------------------------------



ELEV 730	TDZE 730
----------	----------



CATEGORY	A	B	C	D
LPV DA	980-1 250 (300-1)			NA
LNAV/VNAV DA	1343-2¼ 613 (700-2¼)			NA
LNAV MDA	1360-1 630 (700-1)		1360-1¾ 630 (700-1¾)	NA
CIRCLING	1360-1 630 (700-1)		1420-2 690 (700-2)	NA

NC-3, 14 MAY 2026 to 11 JUN 2026

NC-3, 14 MAY 2026 to 11 JUN 2026