

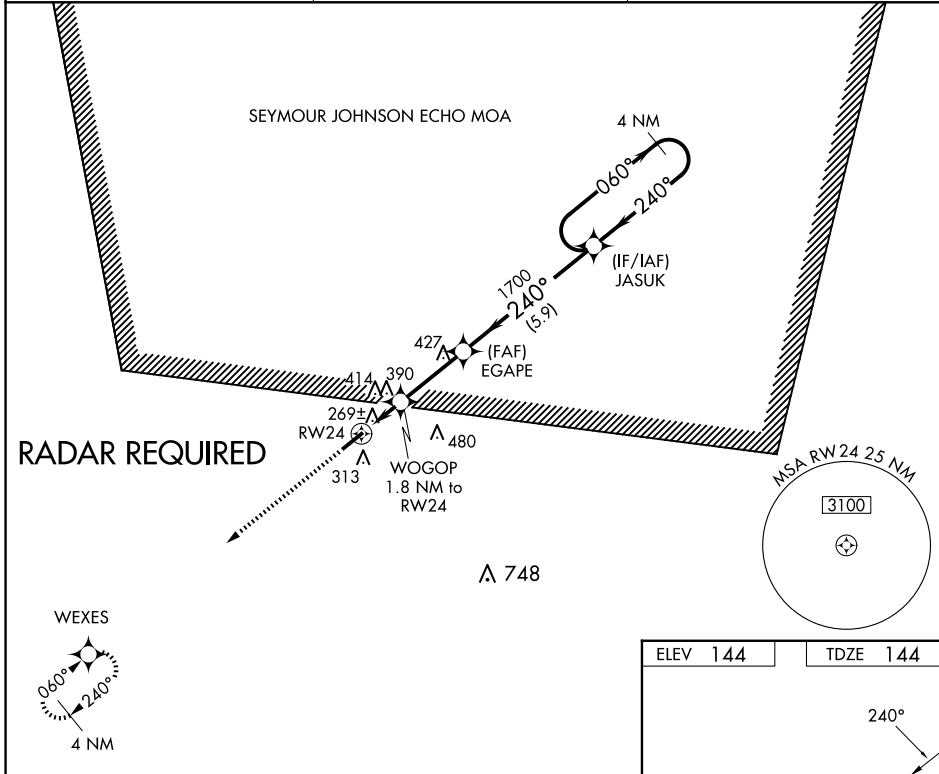
WAAS CH 99321 W24B	APP CRS 240°	Rwy Idg TDZE 144 Apr Elev 144	5002
--	------------------------	---	-------------

RNAV (GPS) Y RWY 24

CLINTON-SAMPSON COUNTY (CTZ)

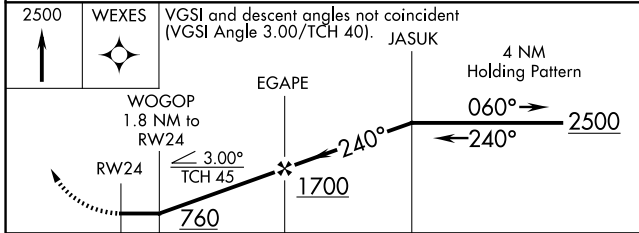
RNP APCH-GPS.	<p>▽ Rwy 24 helicopter visibility reduction below $\frac{3}{4}$ SM NA. When local altimeter setting not received, use DPL altimeter setting and increase all MDAs 60 feet and visibility Cats C and D $\frac{1}{2}$ SM.</p> <p>▲</p>	MISSED APPROACH: Climb to 2500 direct WEXES and hold.
---------------	--	---

AWOS-3 119.125	FAYETTEVILLE APP CON 133.0 290.25	UNICOM 122.8 (CTAF) 0
--------------------------	---	---------------------------------

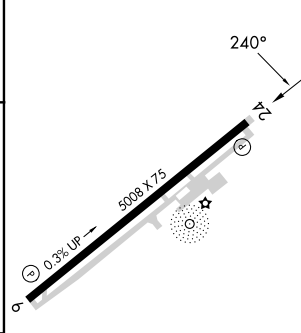


SE-2, 14 MAY 2026 to 11 JUN 2026

SE-2, 14 MAY 2026 to 11 JUN 2026



ELEV 144	TDZE 144
----------	----------



CATEGORY	A	B	C	D
LP MDA	560-1	416 (500-1)	560-1 $\frac{1}{8}$	416 (500-1 $\frac{1}{8}$)
RNAV MDA	640-1	496 (500-1)	640-1 $\frac{3}{8}$	496 (500-1 $\frac{3}{8}$)
CIRCLING	680-1	780-1	840-2	840-2 $\frac{1}{4}$
	536 (600-1)	636 (700-1)	696 (700-2)	696 (700-2 $\frac{1}{4}$)

MIRL Rwy 6-24
REIL Rwy 6 and 24