

WAAS CH 82620 W24A	APP CRS 240°	Rwy Idg TDZE Apt Elev	5008 144 144
--	------------------------	-----------------------------	---

RNAV (GPS) Z RWY 24

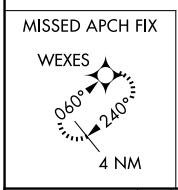
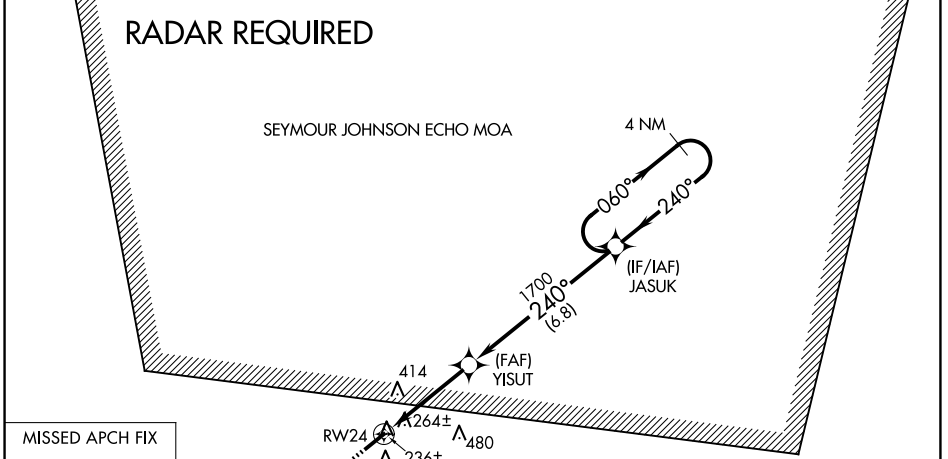
CLINTON-SAMPSON COUNTY (CTZ)

RNP APCH-GPS.

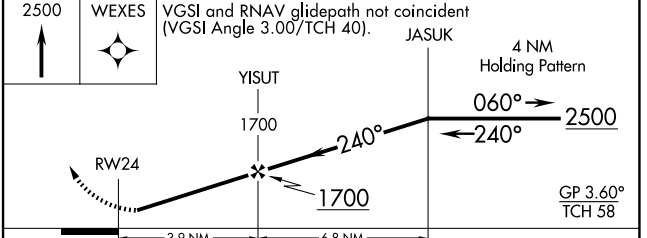
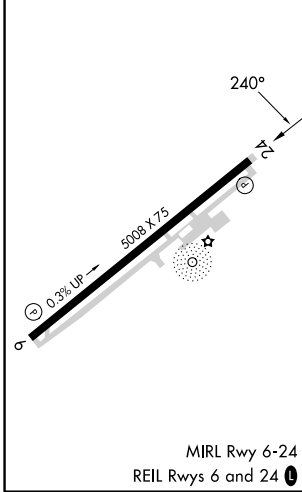
▼ Baro-VNAV NA when using DPL altimeter setting. For uncompensated Baro-VNAV systems, LNAV/VNAV NA below -15°C or above 46°C. When local altimeter setting not received, use DPL altimeter setting and increase all DA 45 feet, increase LNAV/VNAV Cats A/B/C visibility 1/8 mile. Rwy 24 helicopter visibility reduction below 3/4 SM NA.

MISSED APPROACH:
Climb to 2500 direct WEXES and hold.

AWOS-3 119.125	FAYETTEVILLE APP CON 133.0 290.25	UNICOM 122.8 (CTAF) 0
--------------------------	---	---------------------------------



ELEV 144	TDZE 144
----------	----------



CATEGORY	A	B	C	D
LPV DA		470-1	326 (400-1)	NA
LNAV/VNAV DA		566-1 1/4	422 (500-1 1/4)	NA

SE-2, 14 MAY 2026 to 11 JUN 2026

SE-2, 14 MAY 2026 to 11 JUN 2026