

LOC/DME I- OXC 109.55 Chan 32 (Y)	APP CRS 005°	Rwy Ldg 5301 TDZE 721 Apt Elev 730
--	------------------------	---

ILS or LOC RWY 36

WATERBURY-OXFORD (OXC)

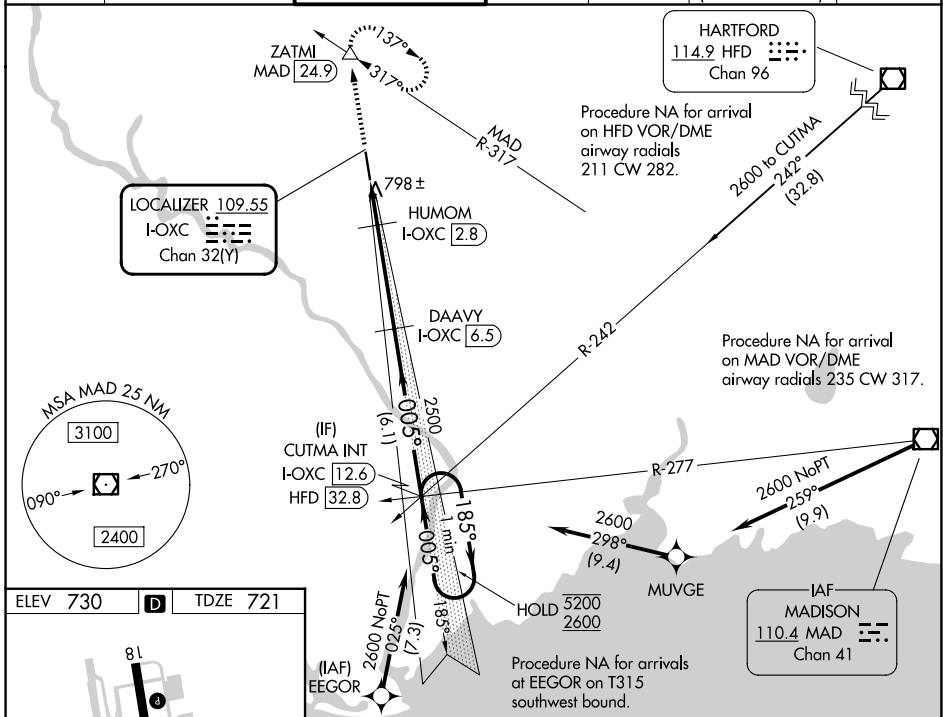
RNP APCH - GPS. From EEOGR or MAD VOR/DME.

DME required.

⚠ Rwy 36 helicopter visibility reduction below 3/4 SM NA. When local weather not received, use DXR altimeter setting: increase S-ILS 35 DA to 1049 and all Cats visibilities 1/4 SM; increase all MDAs 80 feet and S-LOC 36 visibility Cat C and D 1/2 SM, and Circling visibility Cat C and D 1/4 SM.

MISSED APPROACH: Climb to 3000 on heading 005° and MAD VOR/DME R-317 to ZATMI/MAD 24.9 DME and hold, continue climb-in-hold to 3000.

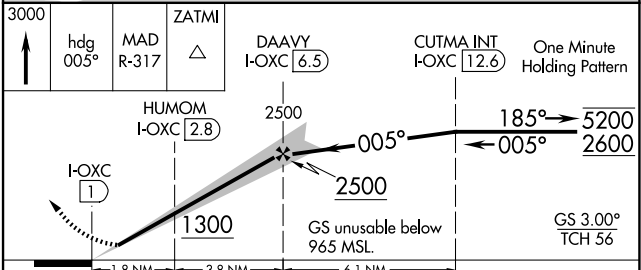
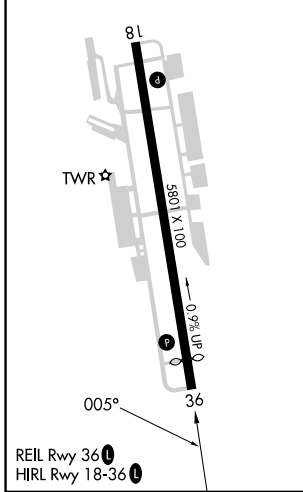
ATIS 132.975	NEW YORK APP CON 124.075 343.65	OXFORD TOWER * 118.475 (CTAF) 0	GND CON 121.65	CLNC DEL 121.65	CLNC DEL 135.1 (When twr closed)	UNICOM 122.95
------------------------	---	--	--------------------------	---------------------------	---	-------------------------



NE-1, 14 MAY 2026 to 11 JUN 2026

NE-1, 14 MAY 2026 to 11 JUN 2026

ELEV 730	D	TDZE 721
-----------------	----------	-----------------



CATEGORY	A	B	C	D
S-ILS 36	971-3/4 250 (300-3/4)			
S-LOC 36	1180-1	459 (500-1)	1180-1 3/8 459 (500-1 3/8)	
CIRCLING	1360-1	630 (700-1)	1380-1 3/4 650 (700-1 3/4)	1460-2 1/4 730 (800-2 1/4)