

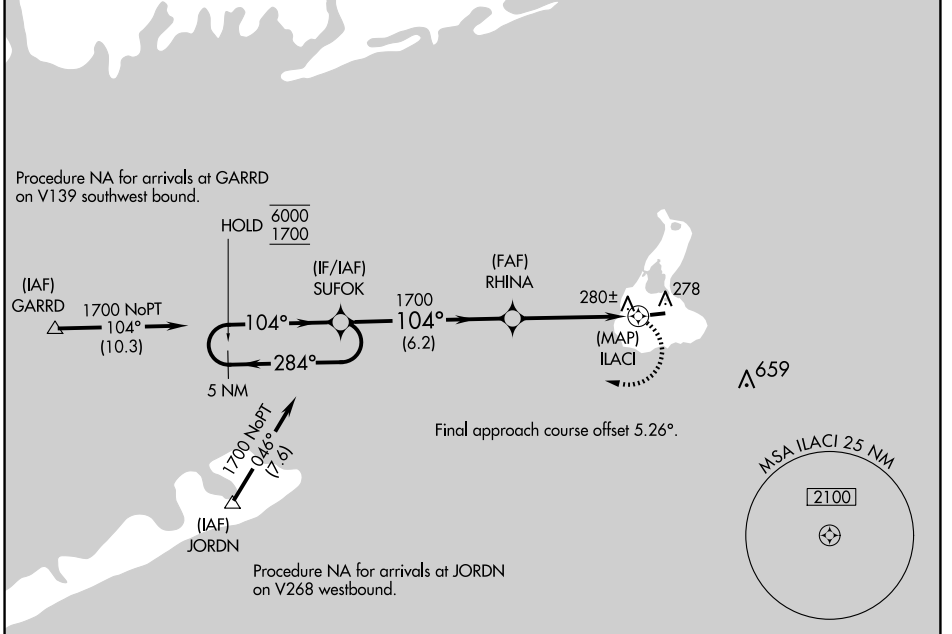
APP CRS <b>104°</b>	Rwy Idg TDZE Apt Elev	<b>2502</b> <b>108</b> <b>108</b>
------------------------	-----------------------------	---

# RNAV (GPS) RWY 10

BLOCK ISLAND STATE (BID)

RNP APCH. ▼ ▲ Rwy 10 helicopter visibility reduction below ¾ SM NA.	MISSED APPROACH: Climbing right turn to 1700 direct SUFOK and hold.
--	---

AWOS-3PT <b>134.775</b>	PROVIDENCE APP CON ★ <b>125.75 319.2</b>	CLNC DEL <b>120.1</b>	UNICOM <b>123.0(CTAF) 0</b>
----------------------------	---	--------------------------	--------------------------------



NE-1, 14 MAY 2026 to 11 JUN 2026

NE-1, 14 MAY 2026 to 11 JUN 2026

ELEV 108	TDZE 108
----------	----------

5 NM Holding Pattern	Visual Segment - Obstacles.			
	SUFOK	RHINA	1700	SUFOK
6000 1700	284°	104°	1700	0.9 NM to ILACI
		6.2 NM	3.6 NM	0.9
CATEGORY	A	B	C	D
RNAV MDA	580-1	472 (500-1)	580-1½ 472 (500-1½)	NA
CIRCLING	640-1	532 (600-1)	640-1½ 532 (600-1½)	NA

