

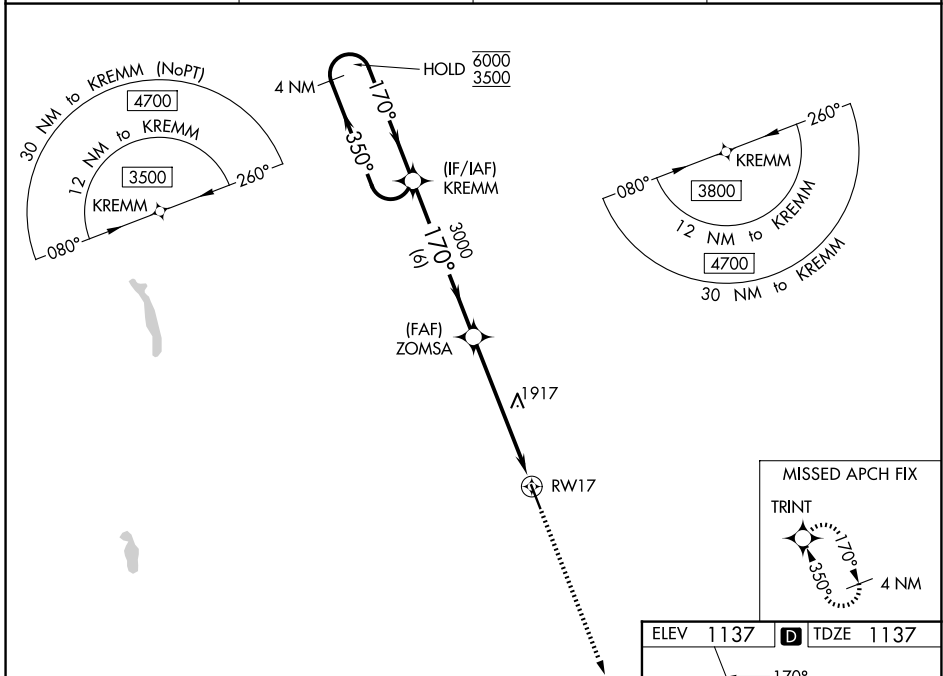
WAAS CH 65818 W17A	APP CRS 170°	Rwy Ldg 5014
		TDZE 1137
		Apt Elev 1137

RNAV (GPS) RWY 17

HAMILTON MUNI (VGC)

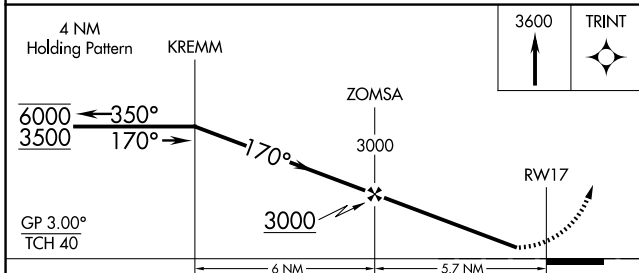
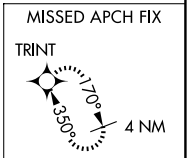
RNP APCH - GPS.	MISSED APPROACH: Climb to 3600 direct TRINT and hold.
<p>▼ Rwy 17 helicopter visibility reduction below 1 SM NA. For uncompensated Baro-VNAV systems, LNAV/VNAV NA below -17°C or above 54°C. Straight-In and Circling Rwy 17 NA at night.</p>	

AWOS-3P 119.425	SYRACUSE APP CON 126.125 269.125	UNICOM 123.0 (CTAF)	122.7
---------------------------	--	-------------------------------	--------------



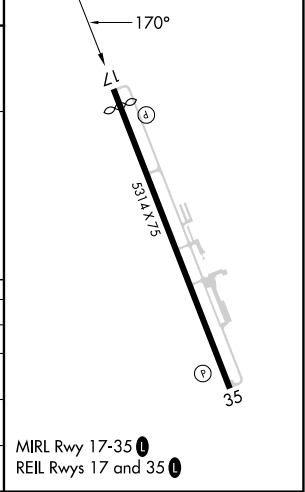
NE-2, 14 MAY 2026 to 11 JUN 2026

NE-2, 14 MAY 2026 to 11 JUN 2026



ELEV 1137	D TDZE 1137
------------------	---------------------------

CATEGORY	A	B	C	D
LPV DA	1447-7/8 310 (400-7/8)			NA
LNAV/VNAV DA	2412-5 1275 (1300-5)			NA
LNAV MDA	2220-1 1/4 1083 (1100-1 1/4)	2220-1 1/2 1083 (1100-1 1/2)	2220-3 1083 (1100-3)	NA
CIRCLING	2220-1 1/4 1083 (1100-1 1/4)	2220-1 1/2 1083 (1100-1 1/2)	2340-3 1203 (1300-3)	NA



MIREL Rwy 17-35
REIL Rwy 17 and 35