

WAAS CH 45717 W20A	APP CRS 202°	Rwy Idg TDZE Apt Elev	6450 874 874
--	------------------------	-----------------------------	---

RNAV (GPS) RWY 20

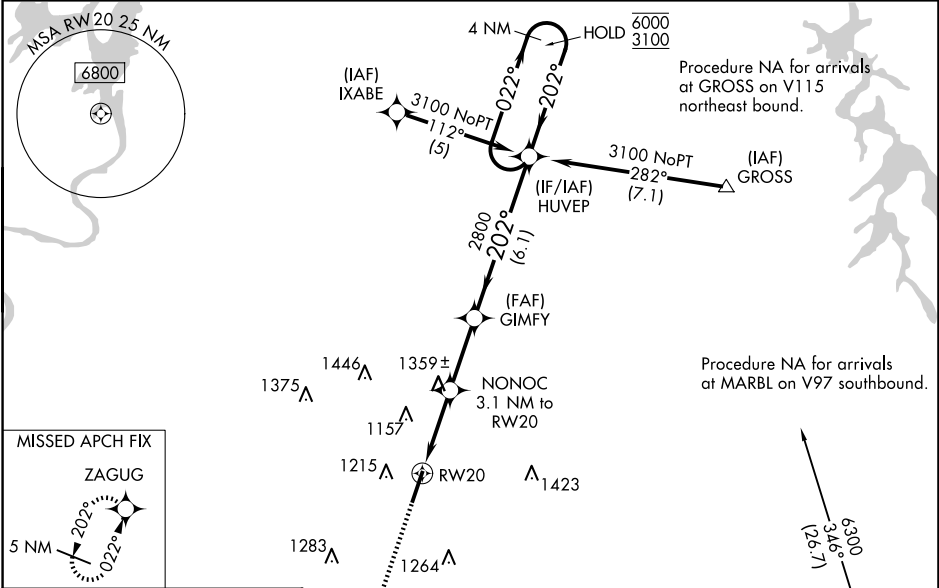
MCMINN COUNTY (MMI)

RNP APCH - GPS.

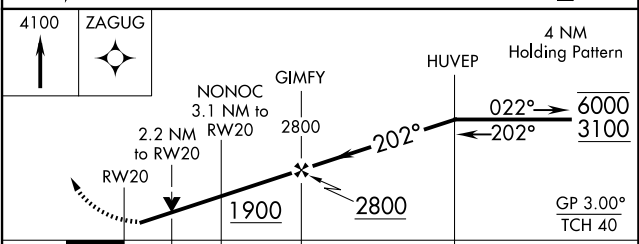
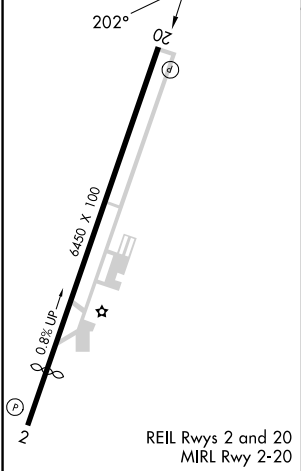
⚠ Circling Rwy 2 NA at night. Baro-VNAV and VDP NA when using Mc Ghee Tyson altimeter setting.
⚠ Rwy 20 helicopter visibility reduction below 3/4 SM NA. For uncompensated Baro-VNAV systems, LNAV/VNAV NA below -16°C or above 54°C. When local altimeter setting not received, use Mc Ghee Tyson altimeter setting; increase LPV DA to 1275 feet and visibility all Cats 1/2 SM; increase LNAV/VNAV DA to 1819 feet and visibility all Cats 1 1/2 SM; increase all MDAs 120 feet and LNAV visibility Cat C and D 1/2 SM, and Circling visibility Cat A and C 1/4 SM.

MISSED APPROACH:
Climb to 4100 direct ZAGUG and hold.

AWOS-3 125.425	KNOXVILLE APP CON 123.9 353.6	UNICOM 122.8 (CTAF)
--------------------------	---	-------------------------------



ELEV 874	TDZE 874
----------	----------



CATEGORY	A	B	C	D
LPV DA		1174-1	300 (300-1)	
LNAV/VNAV DA		1718-2 1/2	844 (900-2 1/2)	
LNAV MDA	1620-1 746 (800-1)	1620-1 1/4 746 (800-1 1/4)	1620-2 746 (800-2)	1820-3 946 (1000-3)
CIRCLING	1620-1 746 (800-1)	1620-1 1/4 746 (800-1 1/4)	1620-2 1/4 746 (800-2 1/4)	1820-3 946 (1000-3)

SE-1, 14 MAY 2026 to 11 JUN 2026

SE-1, 14 MAY 2026 to 11 JUN 2026