

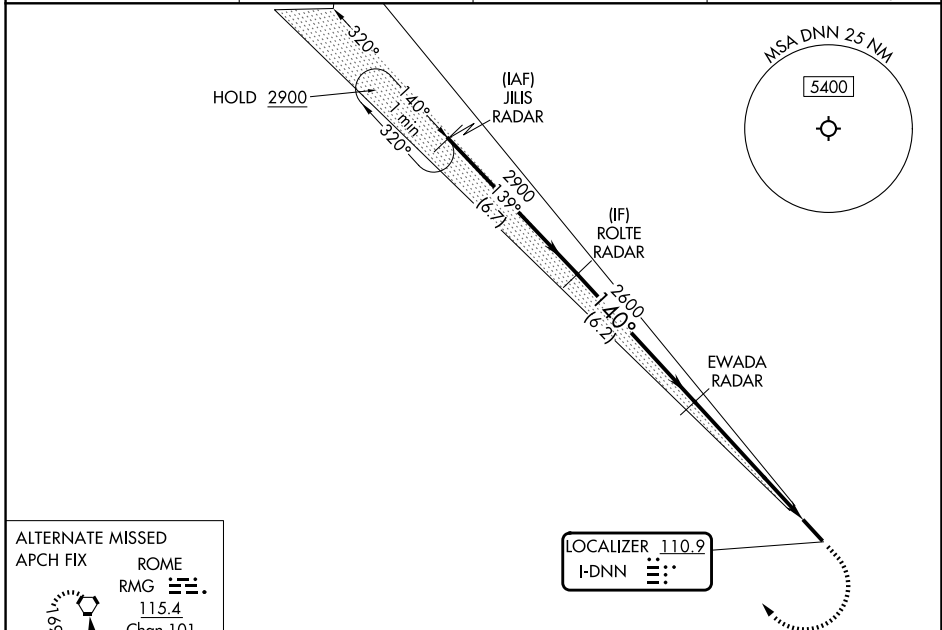
LOC I-DNN 110.9	APP CRS 140°	Rwy Ldg TDZE Apt Elev	5496 709 709
---------------------------	------------------------	-----------------------------	---

ILS or LOC RWY 14

DALTON MUNI (DNN)

RNP APCH - GPS. RADAR required.		MALSR	MISSED APPROACH: Climb to 1700 then climbing right turn to 3000 direct JILS and hold.
<p>⚠ Circling to Rwy 32 NA at night. Autopilot coupled approach NA below 1200 MSL. Rwy 14 helicopter visibility reduction below 3/4 SM NA. Inop table does not apply to S-ILS 14. For inop ALS, increase S-LOC 14 Cat A/B visibility to 1 SM.</p>			

AWOS-3PT 127.65	CHATTANOOGA APP CON ★ 125.1 379.1	CLNC DEL 120.25	UNICOM 122.975 (CTAF) 0
---------------------------	---	---------------------------	-----------------------------------



ALTERNATE MISSED APCH FIX

ROME
RMG
115.4
Chan 101

R-169

LOCALIZER 110.9
I-DNN

VGSI and ILS glidepath not coincident (VGSI Angle 3.00/TCH 55).

ROLTE RADAR	EWADA RADAR	1700	3000	JILS RADAR
2900	2600	↑	↘	
GS 3.00°				
TCH 50				
	6.2 NM	5.8 NM		
CATEGORY	A	B	C	D
S-ILS 14	1074-3/4		365 (400-3/4)	
S-LOC 14	1260-3/4	551 (600-3/4)	1260-1 1/8	551 (600-1 1/8)
CIRCLING	1260-1	551 (600-1)	1340-1 3/4	1420-2 1/4
			631 (700-1 3/4)	711 (800-2 1/4)

ELEV 709	TDZE 709
HIRL Rwy 14-32 0	
FAF to MAP 5.8 NM	
Knots	60 90 120 150 180
Min:Sec	5:48 3:52 2:54 2:19 1:56

SE-4, 14 MAY 2026 to 11 JUN 2026

SE-4, 14 MAY 2026 to 11 JUN 2026