

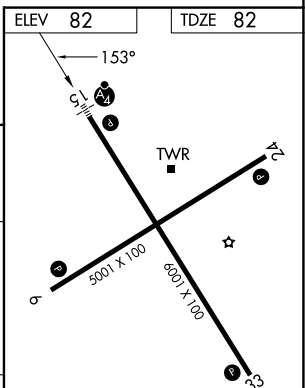
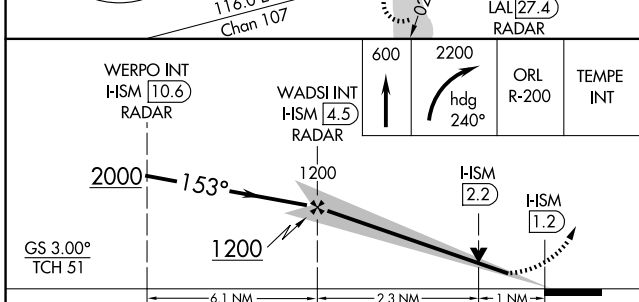
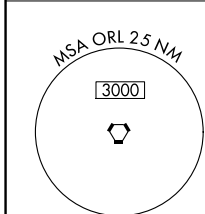
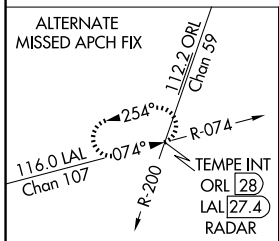
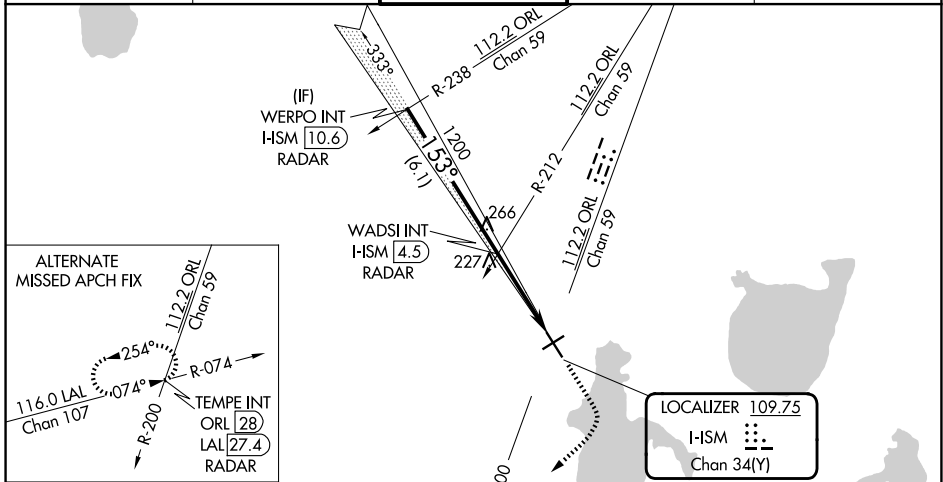
LOC/DME I-HSM <b>109.75</b> Chan <b>34 (Y)</b>	APP CRS <b>153°</b>	Rwy Ldg TDZE Apt Elev	<b>6001</b> <b>82</b> <b>82</b>
--	------------------------	-----------------------------	---------------------------------------

# ILS or LOC RWY 15

## KISSIMMEE GATEWAY (ISM)

RADAR required for procedure entry.		MALSF 	MISSED APPROACH: Climb to 600 then climbing right turn to 2200 on heading 240° and ORL VORTAC R-200 to TEMPE INT/ORL 28 DME and hold.
VDP NA when using MCO altimeter setting. When local altimeter setting not received, use MCO altimeter setting and increase S-ILS 15 DA to 360 feet; increase all MDAs 40 feet and S-LOC 15 visibility Cat C/D ¼ SM, and Circling visibility Cat C ¼ SM. Inop table does not apply to ILS all Cats.	NA		

ATIS <b>128.775</b>	ORLANDO APP CON <b>119.4 351.9</b>	KISSIMMEE TOWER ★ <b>124.45 (CTAF) 0</b>	GND CON <b>121.7</b>	UNICOM <b>122.95</b>
------------------------	---------------------------------------	---	-------------------------	-------------------------



CATEGORY	A	B	C	D
S-ILS 15		332-¾	250 (300-¾)	
S-LOC 15		460-¾	378 (400-¾)	
CIRCLING	680-1	598 (600-1)	680-1½ 598 (600-1½)	700-2 618 (700-2)

REIL Rwy 6, 24 and 33				
MIRL Rwy 15-33 and 6-24				
FAF to MAP 3.3 NM				
Knots	60	90	120	150 180
Min:Sec	3:18	2:12	1:39	1:19 1:06

SE-3, 14 MAY 2026 to 11 JUN 2026

SE-3, 14 MAY 2026 to 11 JUN 2026