

WAAS CH <b>45507</b> <b>W15A</b>	APP CRS <b>153°</b>	Rwy Ldg TDZE Apr Elev	<b>6001</b> <b>82</b> <b>82</b>
--	------------------------	-----------------------------	---------------------------------------

# RNAV (GPS) RWY 15

KISSIMMEE GATEWAY (ISM)

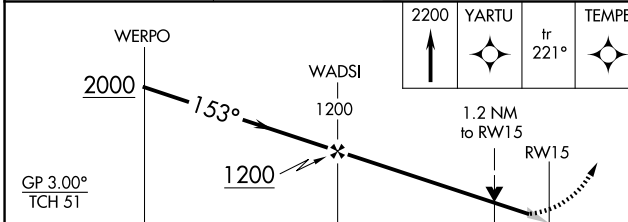
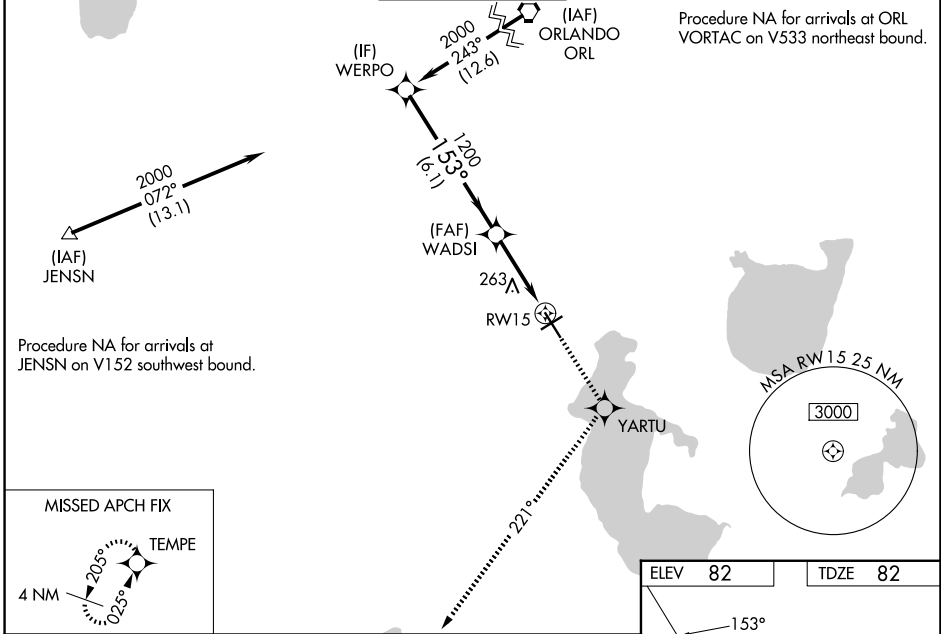
RNP APCH - GPS.

**⚠** Baro-VNAV and VDP NA when using MCO altimeter setting. For uncompensated Baro-VNAV systems, LNAV/VNAV NA below -15°C or above 54°C. Inop table does not apply to LPV all Cats. When local altimeter setting not received, use MCO altimeter setting and increase LPV DA to 360 feet; increase LNAV/VNAV DA to 548 feet and all visibilities 1/2 SM. Increase all MDAs 40 feet and LNAV visibility Cat C/D 1/2 SM, and Circling visibility Cat C 1/2 SM.

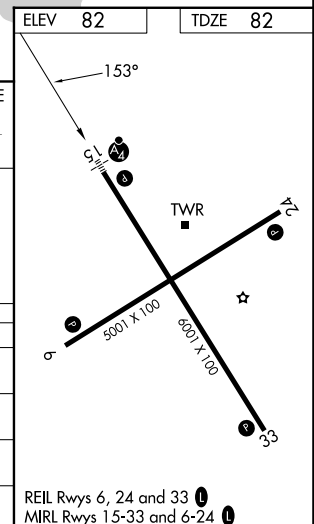


**MISSED APPROACH:** Climb to 2200 direct YARTU and on track 221° to TEMPE and hold.

ATIS <b>128.775</b>	ORLANDO APP CON <b>119.4 351.9</b>	KISSIMMEE TOWER ★ <b>124.45 (CTAF) 0</b>	GND CON <b>121.7</b>	UNICOM <b>122.95</b>
------------------------	---------------------------------------	---	-------------------------	-------------------------



CATEGORY	A	B	C	D
LPV DA	332-3/4		250 (300-3/4)	
LNAV/VNAV DA	520-1		438 (500-1)	
LNAV MDA	520-3/4	438 (500-3/4)	520-1 1/4 438 (500-1 1/4)	520-1 1/2 438 (500-1 1/2)
CIRCLING	680-1	598 (600-1)	680-1 1/2 598 (600-1 1/2)	700-2 618 (700-2)



SE-3, 14 MAY 2026 to 11 JUN 2026

SE-3, 14 MAY 2026 to 11 JUN 2026