

WAAS CH <b>69229</b> <b>W06A</b>	APP CRS <b>063°</b>	Rwy Ldg TDZE Apt Elev	<b>5001</b> <b>82</b> <b>82</b>
--	------------------------	-----------------------------	---------------------------------------

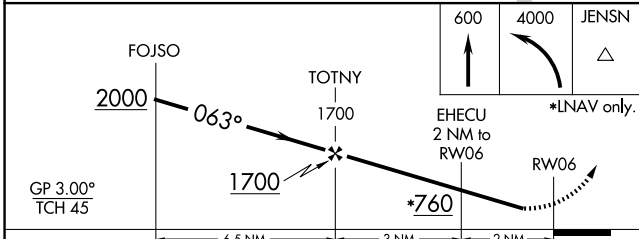
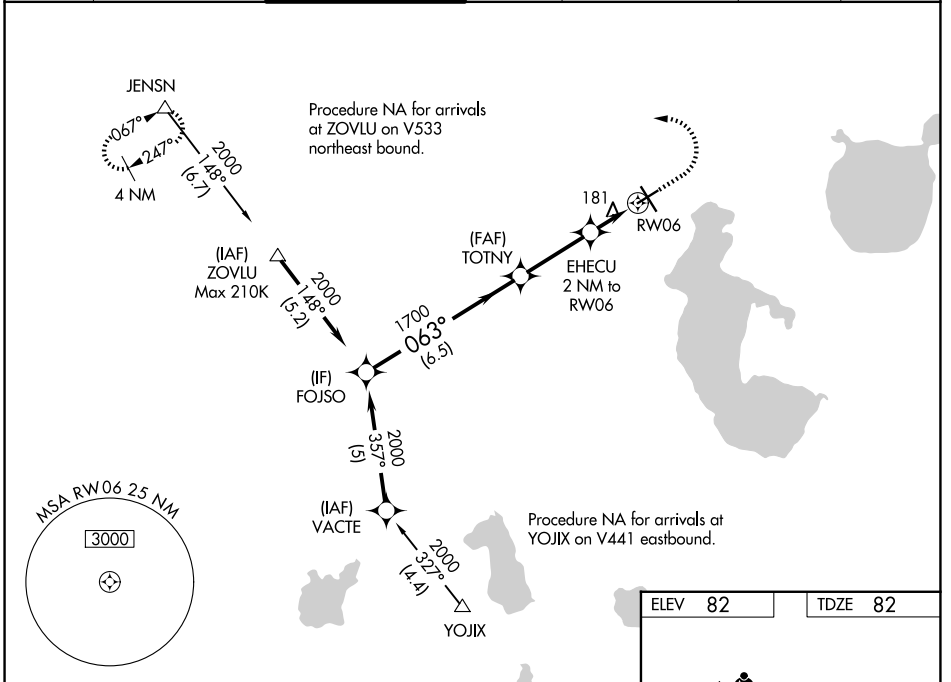
# RNAV (GPS) RWY 6

KISSIMMEE GATEWAY (ISM)

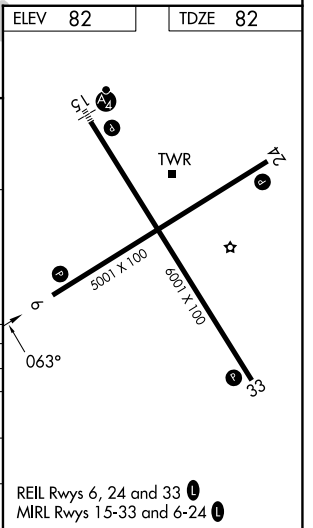
**⚠** Baro-VNAV NA when using Orlando Intl altimeter setting. For uncompensated Baro-VNAV systems, LNAV/VNAV NA below -15°C (5°F) or above 43°C (109°F). DME/DME RNP-0.3 NA. Helicopter visibility reduction below 3/4 SM NA. When local altimeter setting not received, use Orlando Intl altimeter setting and increase all LPV DA to 375, all LNAV/VNAV DA to 484, and all MDA 40 feet; increase LNAV/VNAV all Cats and LNAV Cat C/D visibility 1/8 SM, and Circling Cat C visibility 1/4 SM.

**⚠** MISSED APPROACH: Climb to 600 then climbing left turn to 4000 direct JENSN and hold, continue climb-in-hold to 4000.

ATIS <b>128.775</b>	ORLANDO APP CON <b>119.4 351.9</b>	KISSIMMEE TOWER * <b>124.45 (CTAF)</b> <b>0</b>	CLNC DEL <b>121.7</b>	CLNC DEL <b>123.95</b> (When twr closed)	GND CON <b>121.7</b>	UNICOM <b>122.95</b>
------------------------	---------------------------------------	--	--------------------------	--	-------------------------	-------------------------



CATEGORY	A	B	C	D
LPV DA		348-1	266 (300-1)	
LNAV/VNAV DA		457-1 1/4	375 (400-1 1/4)	
LNAV MDA		440-1	358 (400-1)	
CIRCLING	620-1 538 (600-1)		680-1 1/2 598 (600-1 1/2)	700-2 618 (700-2)



SE-3, 14 MAY 2026 to 11 JUN 2026

SE-3, 14 MAY 2026 to 11 JUN 2026