

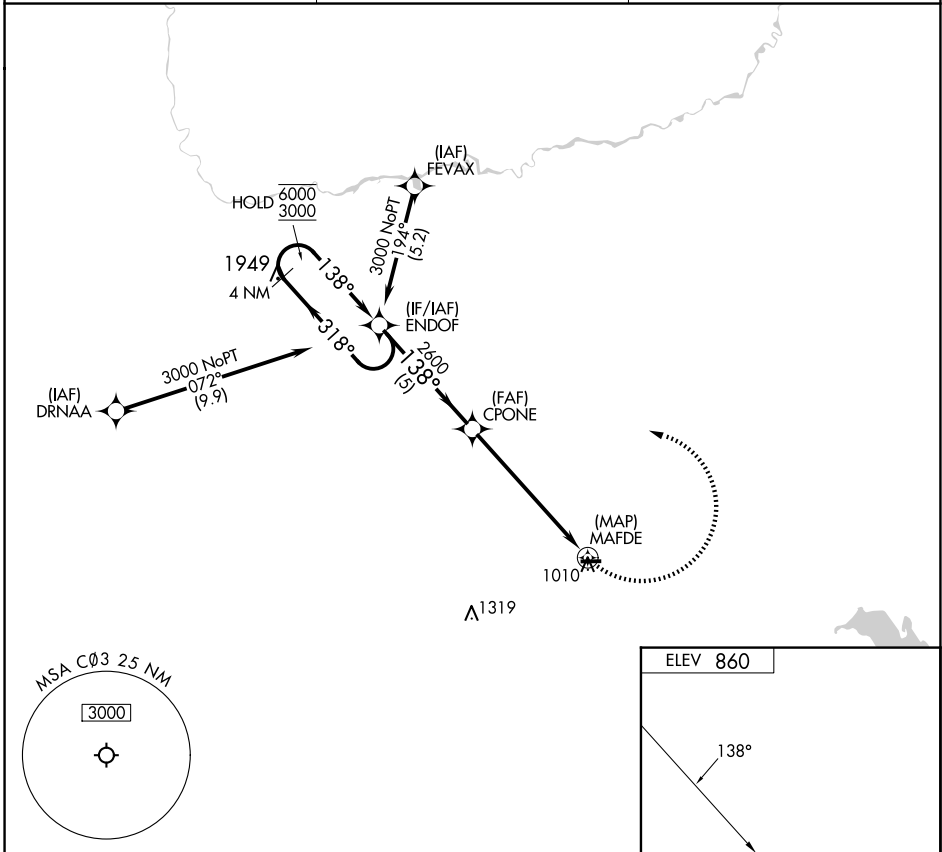
APP CRS	Rwy Idg	N/A
138°	TDZE	N/A
	Apt Elev	860

RNAV (GPS)-A

NAPPANEE MUNI (C03)

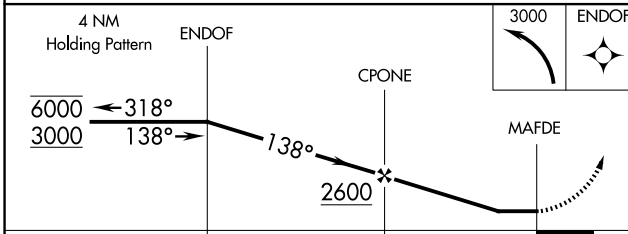
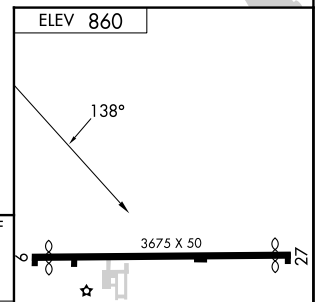
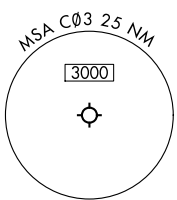
RNP APCH - GPS.	<p>MISSED APPROACH: Climbing left turn to 3000 direct END OF and hold.</p>
<p>V Rwy 9, 27 helicopter visibility reduction below 1 SM NA.</p> <p>Δ NA Procedure NA at night. Use SBN altimeter setting.</p>	

SBN ASOS 120.675	SOUTH BEND APP CON ★ 132.05 257.8	UNICOM 123.0 (CTAF) 0
----------------------------	---	---------------------------------



EC-2, 14 MAY 2026 to 11 JUN 2026

EC-2, 14 MAY 2026 to 11 JUN 2026



CATEGORY	A	B	C	D
CIRCLING	1420-1	560 (600-1)	NA	

