


LOC I-BZQ 111.5	APP CRS 320°	Rwy Ldg TDZE Apt Elev	5701 179 187
---------------------------	------------------------	-----------------------------	---

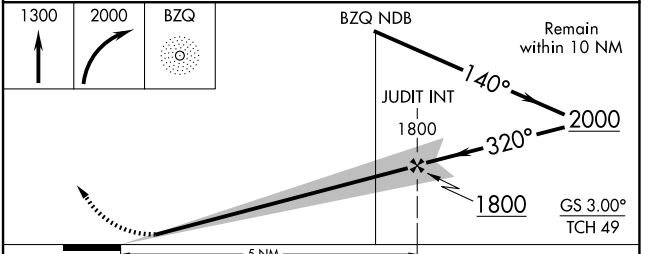
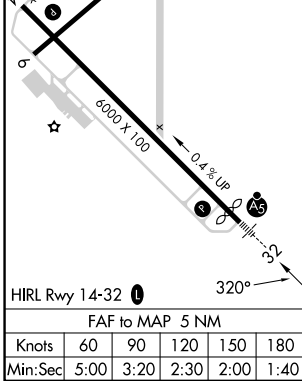
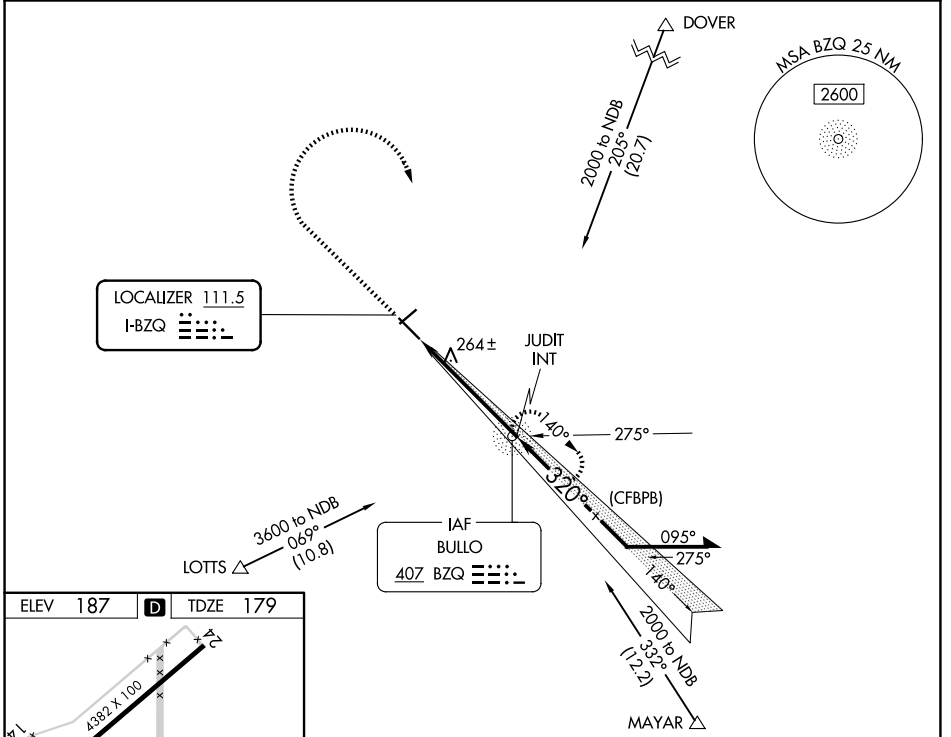
ILS or LOC RWY 32
STATESBORO-BULLOCH COUNTY (TBR)


ADF required.

⚠ Circling to Rwy 6, 24 NA at night. When local altimeter setting not received, use JYL altimeter setting and increase S-ILS 32 DA to 408 feet; increase all MDAs 40 feet; and Circling visibility Cat C ¼ SM. For inop ALS, increase S-LOC 32 Cat C and D visibility to 1 SM.

MALSR  MISSED APPROACH: Climb to 1300 then climbing right turn to 2000 direct BZQ NDB and hold.

AWOS-3 119.025	SAVANNAH APP CON ★ 118.4 307.225	UNICOM 122.725 (CTAF) 0
--------------------------	--	-----------------------------------



ELEV 187	D	TDZE 179			
HIRL Rwy 14-32 					
FAF to MAP 5 NM					
Knots	60	90	120	150	180
Min:Sec	5:00	3:20	2:30	2:00	1:40
CATEGORY	A	B	C	D	
S-ILS 32	379-½				200 (200-½)
S-LOC 32	520-½	341 (400-½)	520-5/8	341 (400-5/8)	
CIRCLING	640-1 453 (500-1)	740-1 553 (600-1)	840-1¾ 653 (700-1¾)	860-2¼ 673 (700-2¼)	

SE-4, 14 MAY 2026 to 11 JUN 2026

SE-4, 14 MAY 2026 to 11 JUN 2026