


WAAS CH 81829 W32A	APP CRS 320°	Rwy Ldg TDZE Apt Elev	5701 179 187
----------------------------------------	------------------------	-----------------------------	-----------------------------------------

RNAV (GPS) RWY 32

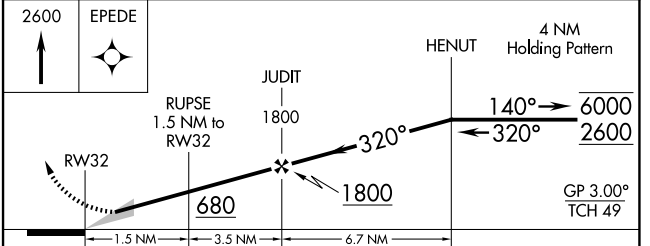
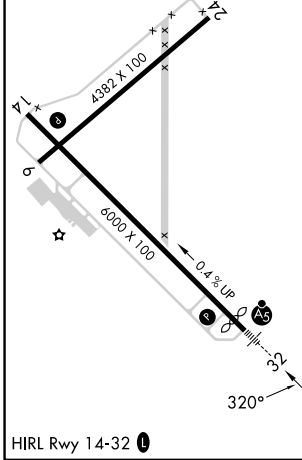
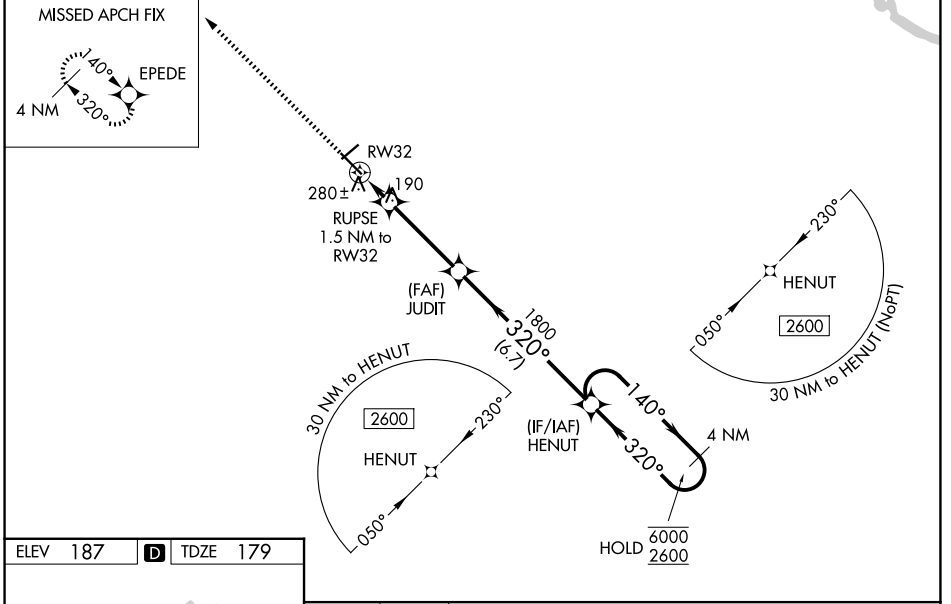
STATESBORO-BULLOCH COUNTY (TBR)

RNP APCH-GPS.

⚠ Circling to Rwy 6/24 NA at night. Baro-VNAV NA when using Sylvania altimeter setting.
 ⚠ For uncompensated Baro-VNAV systems, LNAV/VNAV NA below -1.5°C or above 54°C.
 For inop ALS. Increase LNAV/VNAV all Cats visibility to ¾ SM and LNAV Cats C/D to 1½ SM. When local altimeter setting not received. Use Sylvania altimeter setting and increase LPV DA to 408 feet; increase LNAV/VNAV DA to 490 feet; increase all MDAs 40 feet and LNAV visibility Cat C/D ½ SM, and Circling visibility Cat C ¼ SM. For inop ALS when using Sylvania altimeter setting, increase LNAV/VNAV all Cats visibility to ¾ SM and LNAV Cat C/D to 1½ SM.

MALSRL
 MISSED APPROACH: Climb to 2600 direct EPEDE and hold.

AWOS-3 119.025	SAVANNAH APP CON * 118.4 307.225	UNICOM 122.725 (CTAF) 0
--------------------------	--------------------------------------------	-----------------------------------



CATEGORY	A	B	C	D
LPV DA		379-½	200 (200-½)	
LNAV/VNAV DA		461-½	282 (300-½)	
LNAV MDA	540-½	361 (400-½)	540-⅝	361 (400-⅝)
CIRCLING	640-1 453 (500-1)	740-1 553 (600-1)	840-1¾ 653 (700-1¾)	860-2¼ 673 (700-2¼)

SE-4, 14 MAY 2026 to 11 JUN 2026

SE-4, 14 MAY 2026 to 11 JUN 2026