


LOC I-BPM <b>111.9</b>	APP CRS <b>133°</b>	Rwy Ldg TDZE Apt Elev	<b>7000</b> <b>1031</b> <b>1031</b>
---------------------------	------------------------	-----------------------------	---

# ILS or LOC RWY 13

ST CLOUD SKY CENTRAL (STC)

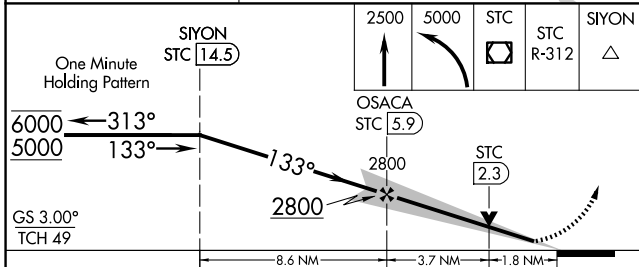
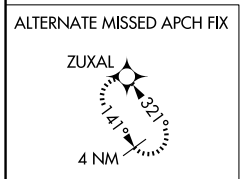
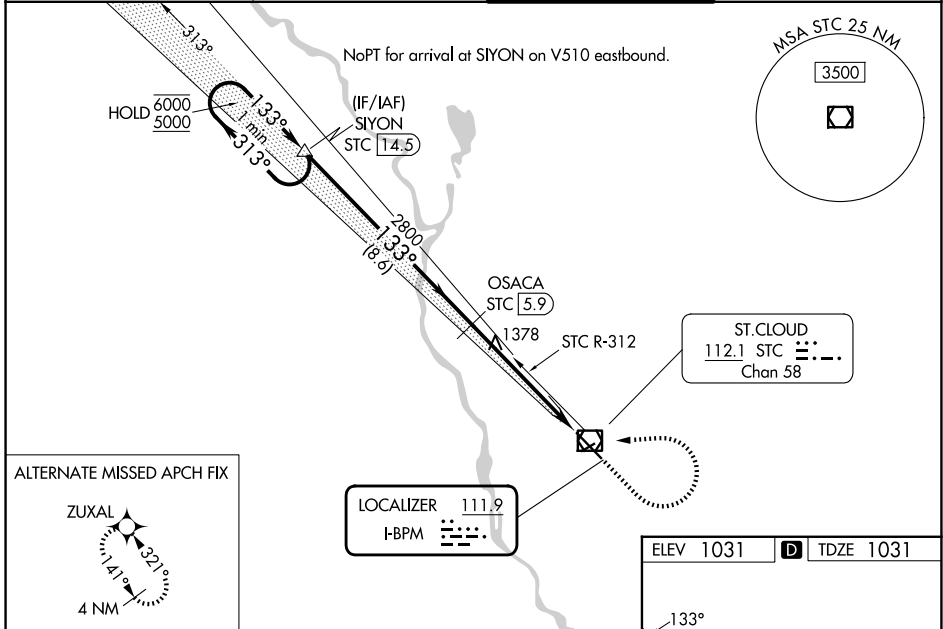
DME required.

**⚠** For inop ALS when using Little Falls altimeter setting, increase S-ILS-13 all Cats visibility to ¾ SM. When local altimeter setting not received, use Little Falls altimeter setting, increase DA to 1307 feet; increase all MDAs 80 feet and S-LOC 13 visibility Cats C and D ¼ SM, and Circling visibility Cats C and D ¼ SM. For inop ALS, increase S-LOC 13 Cats C and D visibility to 1¾ SM. DME from STC VOR/DME. DME use requires simultaneous reception of I-BPM and STC DME. VDP NA when using Little Falls altimeter setting.

MALSR 

MISSED APPROACH: Climb to 2500 then climbing left turn to 5000 direct STC VOR/DME and on STC VOR/DME R-312 to SIYON/STC 14.5 DME and hold.

ATIS <b>119.375</b>	MINNEAPOLIS CENTER <b>121.05 235.775</b>	ST. CLOUD TOWER ★ <b>118.25 (CTAF) 0</b>	GND CON <b>123.75</b>
------------------------	---	---	--------------------------



ELEV 1031	D	TDZE 1031
-----------	---	-----------

MIRL Rwy 5-23	0				
HIRL Rwy 13-31	0				
FAF to MAP 5.4 NM					
Knots	60	90	120	150	180
Min:Sec	5:24	3:36	2:42	2:10	1:48

CATEGORY	A	B	C	D
S-ILS 13	1231-½ 200 (200-½)			
S-LOC 13	1640-½ 609 (700-½)		1640-1¾ 609 (700-1¾)	
CIRCLING	1640-1 609 (700-1)		1640-1¾ 609 (700-1¾) 1860-2¾ 829 (900-2¾)	

NC-1, 14 MAY 2026 to 11 JUN 2026

NC-1, 14 MAY 2026 to 11 JUN 2026