

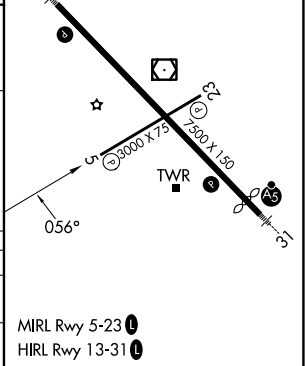
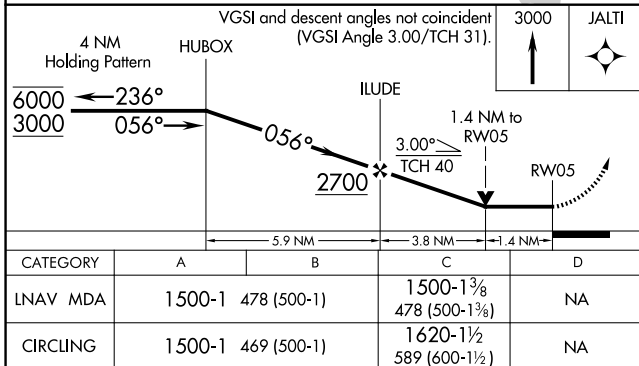
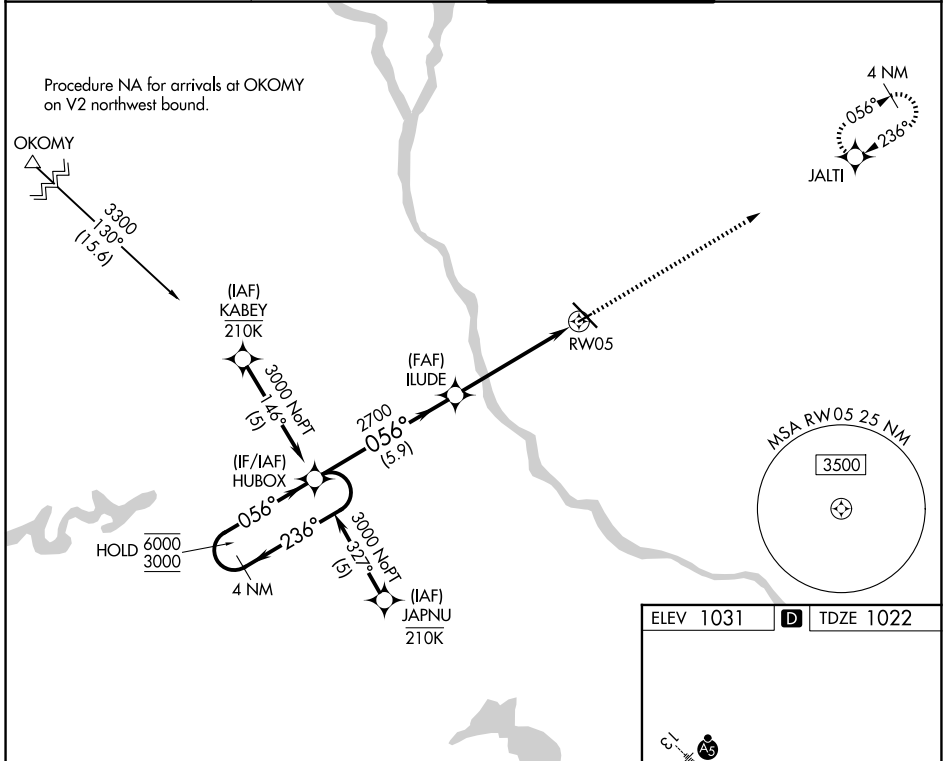
APP CRS	Rwy Ldg	3000
056°	TDZE	1022
	Apt Elev	1031

RNAV (GPS) RWY 5

ST CLOUD SKY CENTRAL (STC)

RNP APCH - GPS.	<p>⚠ Rwy 5 helicopter visibility reduction below 3/4 SM NA. When local altimeter setting not received, use Little Falls altimeter setting, increase all MDAs 80 feet and LNAV visibility Cat C 1/4 SM. VDP NA when using Little Falls altimeter setting.</p>	<p>MISSED APPROACH: Climb to 3000 direct JALTI and hold.</p>

ATIS 119.375	MINNEAPOLIS CENTER 121.05 235.775	ST. CLOUD TOWER * 118.25 (CTAF) 0	GND CON 123.75
------------------------	---	---	--------------------------



NC-1, 14 MAY 2026 to 11 JUN 2026

NC-1, 14 MAY 2026 to 11 JUN 2026