

LOC/DME I-SBO 109.35 Chan 30(Y)	APP CRS 136°	Rwy Ldg 6021 TDZE 327 Apt Elev 327
--	------------------------	---

ILS or LOC RWY 14

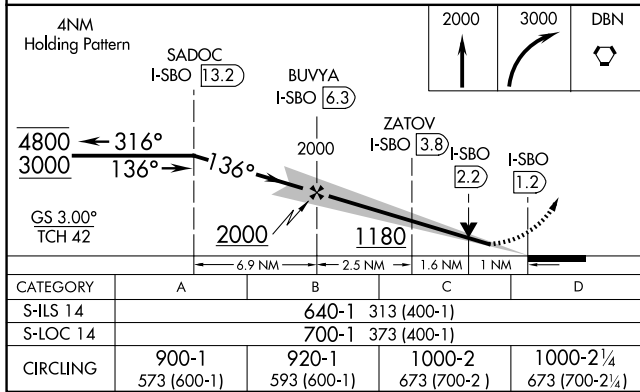
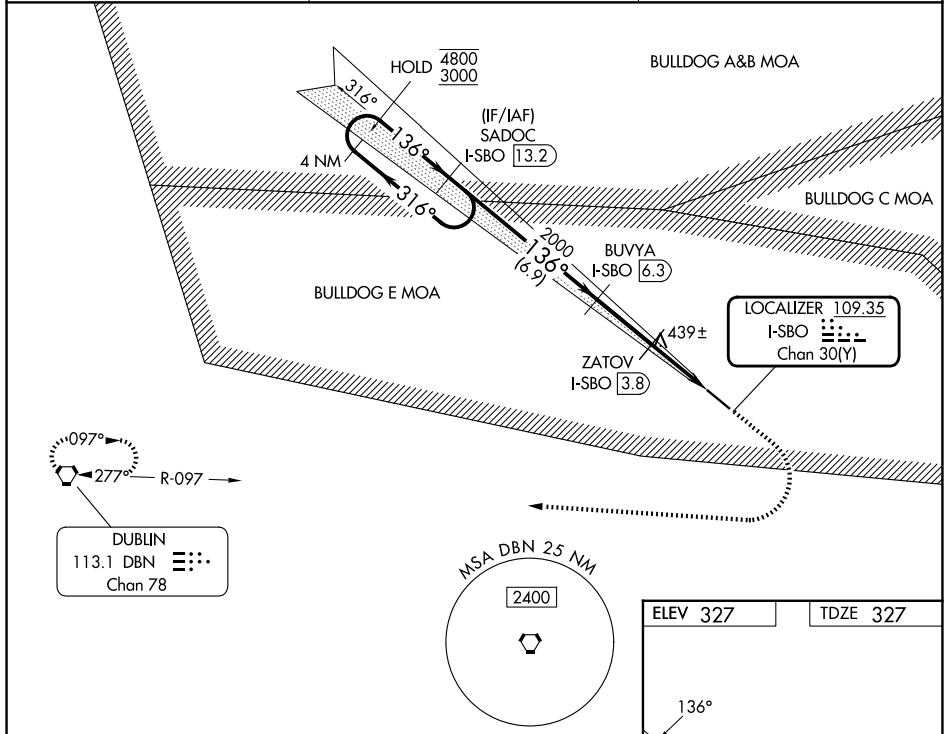
EAST GEORGIA RGNL (SBO)

DME required. RADAR required for procedure entry.

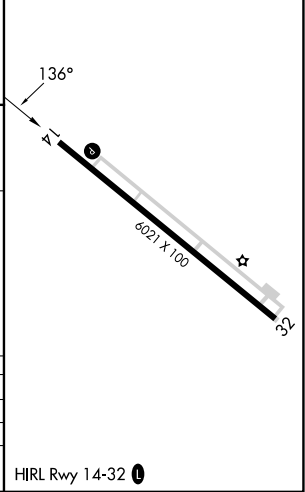
⚠ Rwy 14 helicopter visibility reduction below ¼ SM NA. VDP NA when using Vidalia altimeter setting. When local altimeter setting not received, use Vidalia altimeter setting: increase S-ILS 14 DA to 705 feet; increase all MDAs 80 feet and visibility S-LOC 14 Cats C and D ¾ SM, and Circling Cats C and D ¼ SM.

MISSED APPROACH: Climb to 2000 then climbing right turn to 3000 direct DBN VORTAC and hold.

AWOS-3 133.375	ATLANTA CENTER 127.95 343.75	UNICOM 122.975 (CTAF) 1
--------------------------	--	--



ELEV 327	TDZE 327
----------	----------



SE-4, 14 MAY 2026 to 11 JUN 2026

SE-4, 14 MAY 2026 to 11 JUN 2026