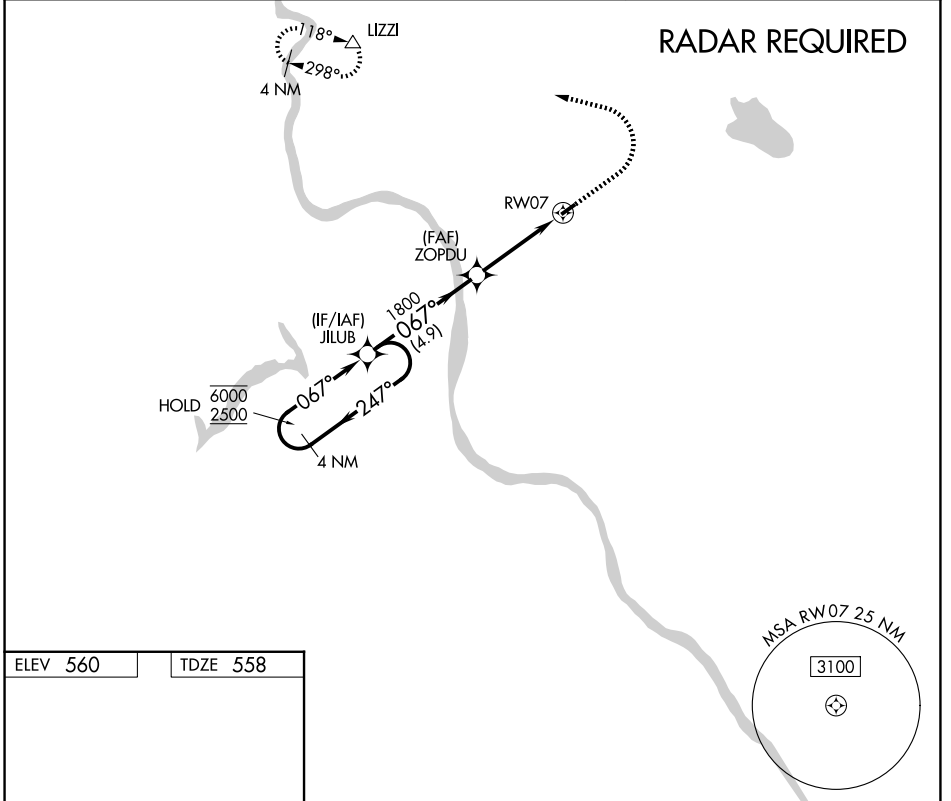


APP CRS	Rwy Ldg	<b>2900</b>
<b>067°</b>	TDZE	<b>558</b>
	Apt Elev	<b>560</b>

# RNAV (GPS) RWY 7

SKY MANOR (N4~~0~~)

RNP APCH	<p>Procedure NA at night. When local altimeter setting not received, use Lehigh Valley Intl altimeter setting. Rwy 7 helicopter visibility reduction below 1 SM NA.</p>	<p>MISSED APPROACH: Climb to 1100 then climbing left turn to 3000 direct IZZI and hold.</p>
AWOS-3	ALLENTOWN APP CON	UNICOM
<b>121.725</b>	<b>119.65 124.45 351.8</b>	<b>122.975 (CTAF) 0</b>



NE-2, 14 MAY 2026 to 11 JUN 2026

NE-2, 14 MAY 2026 to 11 JUN 2026

