

APP CRS	Rwy Ldg	N/A
184°	TDZE	N/A
	Apt Elev	29

RNAV (GPS)-B

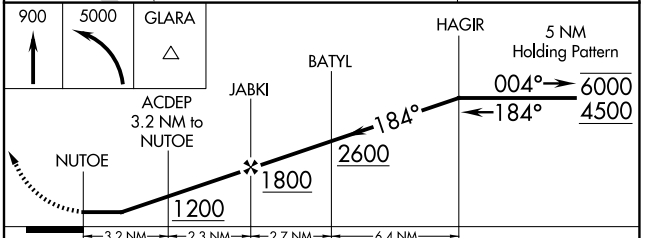
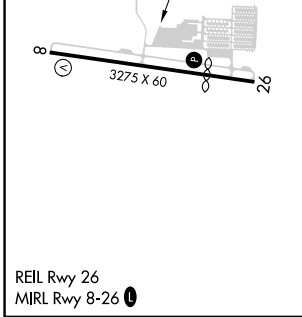
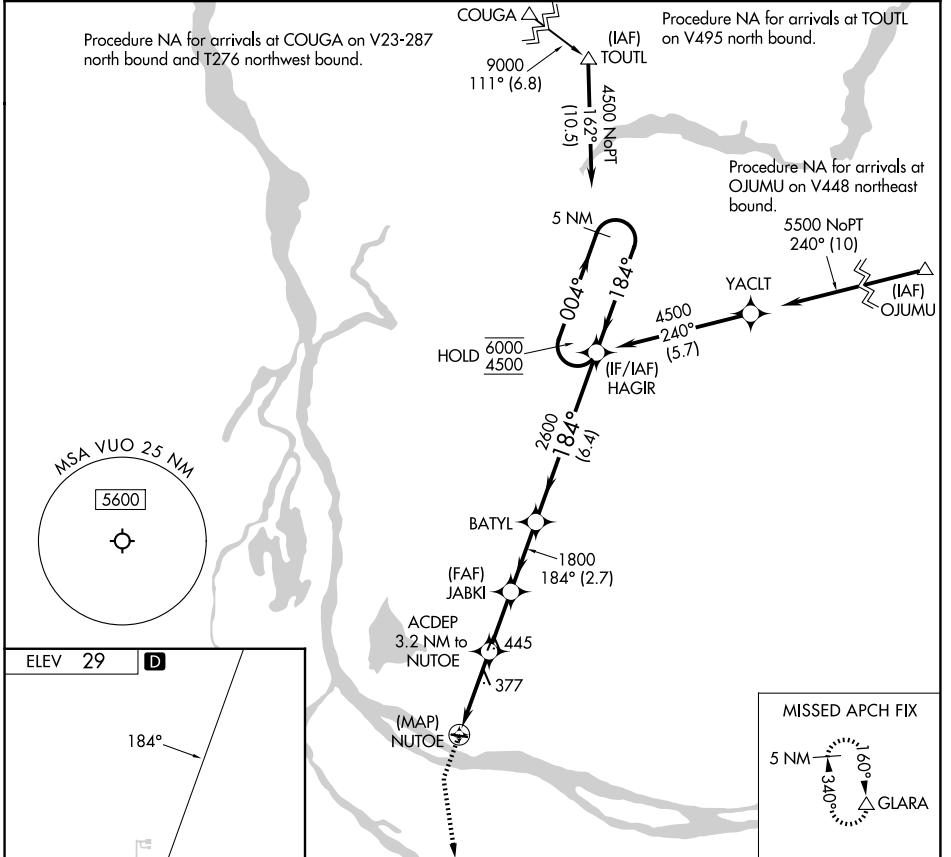
PEARSON FLD (VUO)

RNP APCH - GPS.

⚠ When local altimeter setting not received, use Portland Intl altimeter setting.

MISSED APPROACH: Climb to 900 then climbing left turn to 5000 direct GLARA and hold, continue climb-in-hold to 5000.

ASOS 135.125	PORTLAND APP CON 124.35 360.8	CLNC DEL 119.0 (CTAF) 0
------------------------	---	-----------------------------------



CATEGORY	A	B	C	D
CIRCLING	720-1 691 (700-1)	740-1 711 (800-1)	NA	

NW-1, 14 MAY 2026 to 11 JUN 2026

NW-1, 14 MAY 2026 to 11 JUN 2026