

WAAS CH 90237 W03A	APP CRS 028°	Rwy Ldg TDZE Apt Elev	3701 2595 2595
--	------------------------	-----------------------------	---

RNAV (GPS) RWY 3

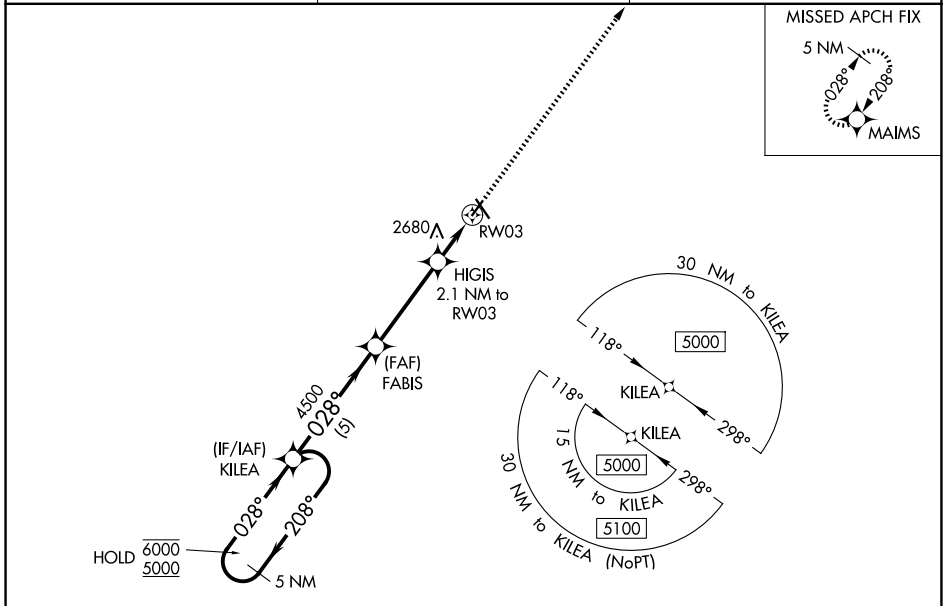
MILLER FLD (VTN)

RNP APCH - GPS.

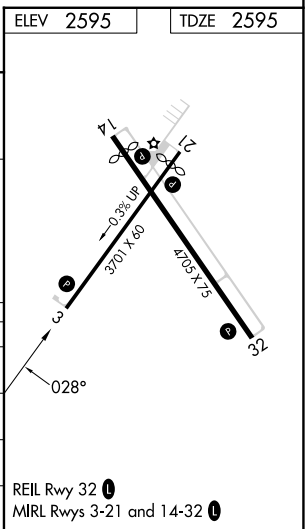
⚠ For uncompensated Baro-VNAV systems, LNAV/VNAV NA below -25°C or above 54°C. When local altimeter setting not received, use ANW altimeter setting and increase all DA to 2916 feet. Increase all MDAs 80 feet. Baro-VNAV and VDP NA when using ANW altimeter setting.

MISSED APPROACH: Climb to 5000 direct MAIMS and hold, continue climb-in-hold to 5000.

ASOS 118.075	DENVER CENTER 127.95 338.2	UNICOM 122.8 (CTAF) 0
------------------------	--------------------------------------	---------------------------------



5 NM Holding Pattern		KILEA	FABIS	HIGIS	RW03	5000	MAIMS
6000 ← 208°		5000 → 028°	4500	3300	1 NM to RW03	1 NM to RW03	
GP 3.00°		5 NM		3.8 NM	1.1 NM	1 NM	
TCH 39		5 NM		3.8 NM	1.1 NM	1 NM	
CATEGORY	A	B	C	D			
LPV DA	2845-1	250 (300-1)	NA				
LNAV/VNAV DA	2845-1	250 (300-1)	NA				
LNAV MDA	2940-1	345 (400-1)	NA				
CIRCLING	3080-1 485 (500-1)	3560-1½ 965 (1000-1½)	NA				



NC-2, 14 MAY 2026 to 11 JUN 2026

NC-2, 14 MAY 2026 to 11 JUN 2026