

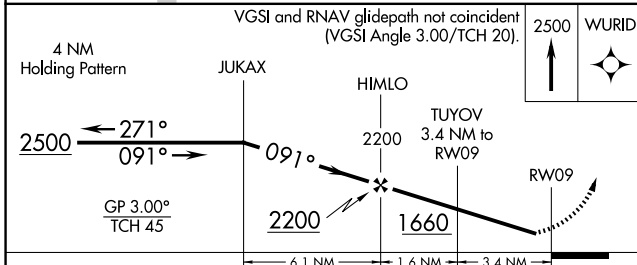
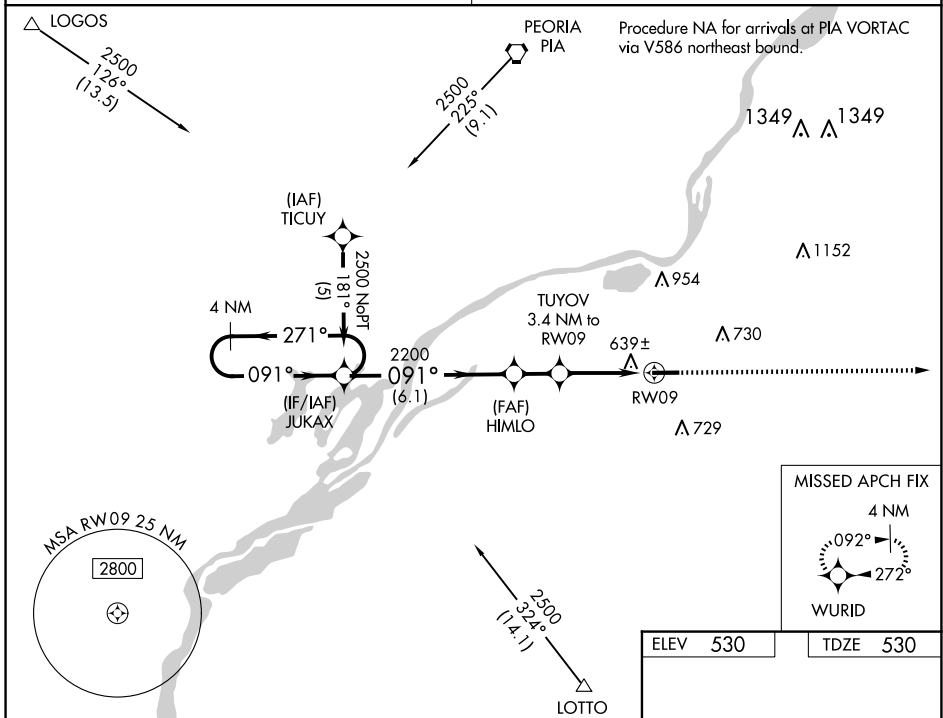
WAAS CH <b>53509</b> <b>W09A</b>	APP CRS <b>091°</b>	Rwy Idg TDZE Apt Elev	<b>5000</b> <b>530</b> <b>530</b>
--	------------------------	-----------------------------	---

# RNAV (GPS) RWY 9

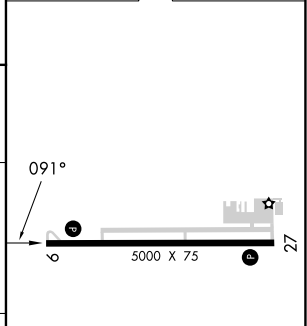
PEKIN MUNI (C15)

RNP APCH-GPS	Baro-VNAV NA. Rwy 9 helicopter visibility reduction below 3/4 SM NA. Use General Downning - Peoria Intl altimeter setting; when not received, use Lincoln glimeter setting; increase LPV DA to 887 feet; increase LNAV/VNAV DA to 1007 feet; increase all MDAs 40 feet and visibility Cat C and D 1/4 SM.	MISSED APPROACH: Climb to 2500 direct WURID and hold.
--------------	---	---

SAINT LOUIS APP CON <b>125.8 269.2</b>	UNICOM <b>122.8 (CTAF)</b>
---	-------------------------------



ELEV 530	TDZE 530
----------	----------



CATEGORY	A	B	C	D
LPV DA		862-1	332 (400-1)	
LNAV/VNAV DA		982-1 3/8	452 (500-1 3/8)	
LNAV MDA	940-1 410 (500-1)		940-1 1/8 410 (500-1 1/8)	
CIRCLING	1060-1 530 (600-1)		1100-1 1/2 570 (600-1 1/2)	1360-2 3/4 830 (900-2 3/4)

REIL Rwy 9 and 27 **1**  
MIRL Rwy 9-27 **1**

EC-3, 14 MAY 2026 to 11 JUN 2026

EC-3, 14 MAY 2026 to 11 JUN 2026