

PEKIN, ILLINOIS

AL-5812 (FAA)

23278

VORTAC PIA <b>115.2</b> Chan <b>99</b>	APP CRS <b>151°</b>	Rwy Idg TDZE Apt Elev <b>530</b>	<b>N/A</b> <b>N/A</b> <b>530</b>
--	------------------------	---	--

**VOR-A**  
PEKIN MUNI (C15)

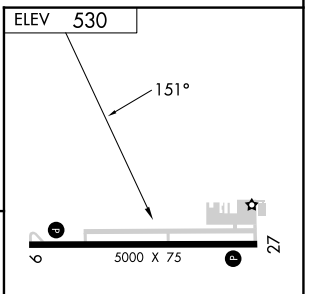
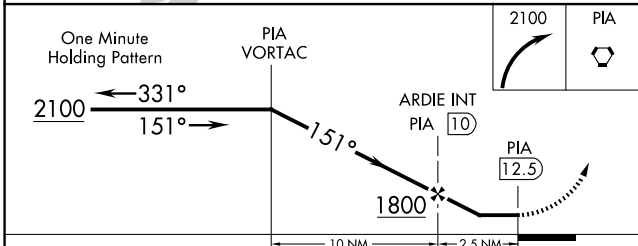
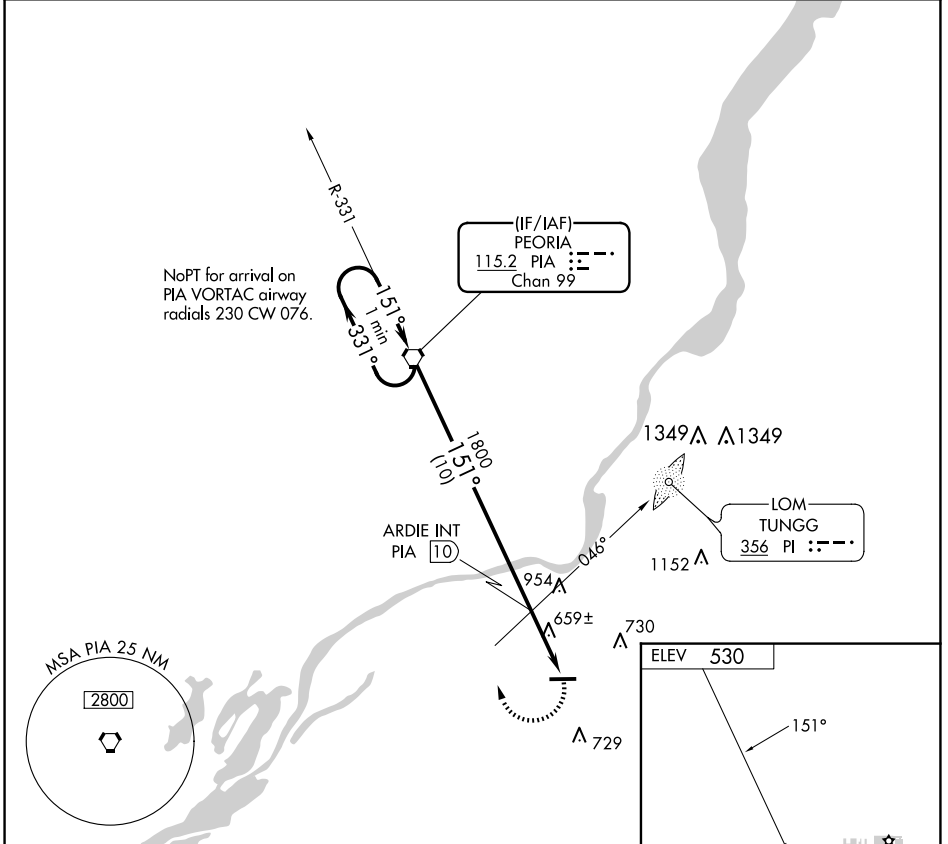
DME or ADF required.

▼ Use General Downwing - Peoria Intl altimeter setting; when not received use Lincoln  
▲ NA altimeter setting and increase all MDAs 40 feet and visibility Cat C ¼ SM.

MISSED APPROACH: Climbing right turn to 2100 direct PIA VORTAC and hold.

SAINT LOUIS APP CON **125.8 269.2**

UNICOM **122.8 (CTAF) 0**



REIL Rwy 9 and 27  
MIRL Rwy 9-27

CATEGORY	A	B	C	D	FAF to MAP 2.5 NM					
CIRCLING	1060-1	530 (600-1)	1100-1½ 570 (600-1½)	1360-2¾ 830 (900-2¾)	Knots	60	90	120	150	180
					Min:Sec	2:30	1:40	1:15	1:00	0:50

PEKIN, ILLINOIS  
Amdt 7C 19MAY22

40°29'N-89°41'W

PEKIN MUNI (C15)  
**VOR-A**

EC-3, 14 MAY 2026 to 11 JUN 2026

EC-3, 14 MAY 2026 to 11 JUN 2026