

VORTAC PGY 116.45 Chan 111(Y)	APP CRS 156°	Rwy Ldg TDZE Apt Elev	N/A N/A 526
---	------------------------	-----------------------------	--

VOR or TACAN-A

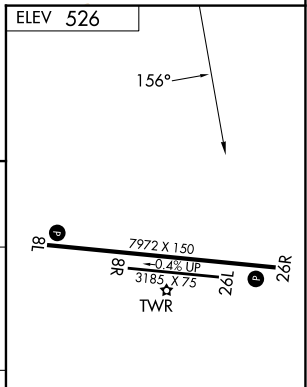
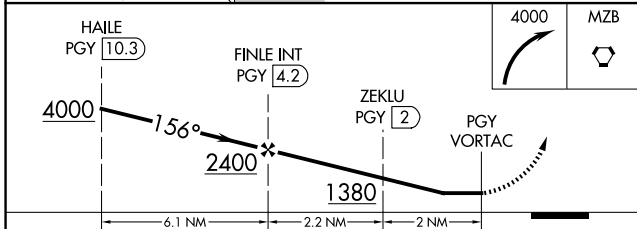
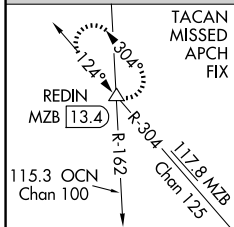
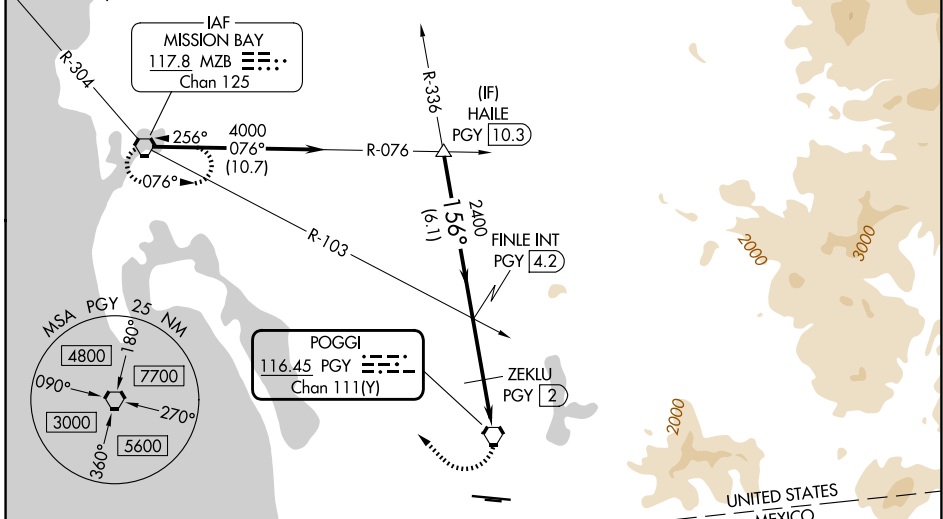
BROWN FLD MUNI (SDM)

⚠ Circling NA south of Rwy 8R-26L.

MISSED APPROACH: Climbing right turn 4000 to MZB VORTAC and hold. (TACAN aircraft continue on MZB VORTAC R-304 to REDIN INT/MZB VORTAC 13.4 DME and hold NW, LT, 124° inbound).

ATIS 132.35	SOCAL APP CON 124.35 279.625	BROWN TOWER ★ 128.25 (CTAF) 0 225.4	GND CON 124.4	UNICOM 122.95
-----------------------	--	---	-------------------------	-------------------------

Procedure NA for arrival on MZB VORTAC
airway radials 076 CW 114.



CATEGORY	A	B	C	D
CIRCLING		1380-2 ³ / ₄ 854 (900-2 ³ / ₄)		2260-3 1734 (1800-3)
ZEKLU FIX MINIMUMS (DME REQUIRED)				
CIRCLING	1140-2 ³ / ₄ 614 (700-2 ³ / ₄)		1340-2 ³ / ₄ 814 (900-2 ³ / ₄)	2260-3 1734 (1800-3)

REIL Rwy 26R

REIL Rwy 8L

MIRL Rwy 8R-26L

HIRL Rwy 8L-26R

SW-3, 14 MAY 2026 to 11 JUN 2026

SW-3, 14 MAY 2026 to 11 JUN 2026