

WAAS CH 69201 W30A	APP CRS 297°	Rwy Ldg TDZE Apt Elev	3740 193 193
--	------------------------	-----------------------------	---

RNAV (GPS) RWY 30

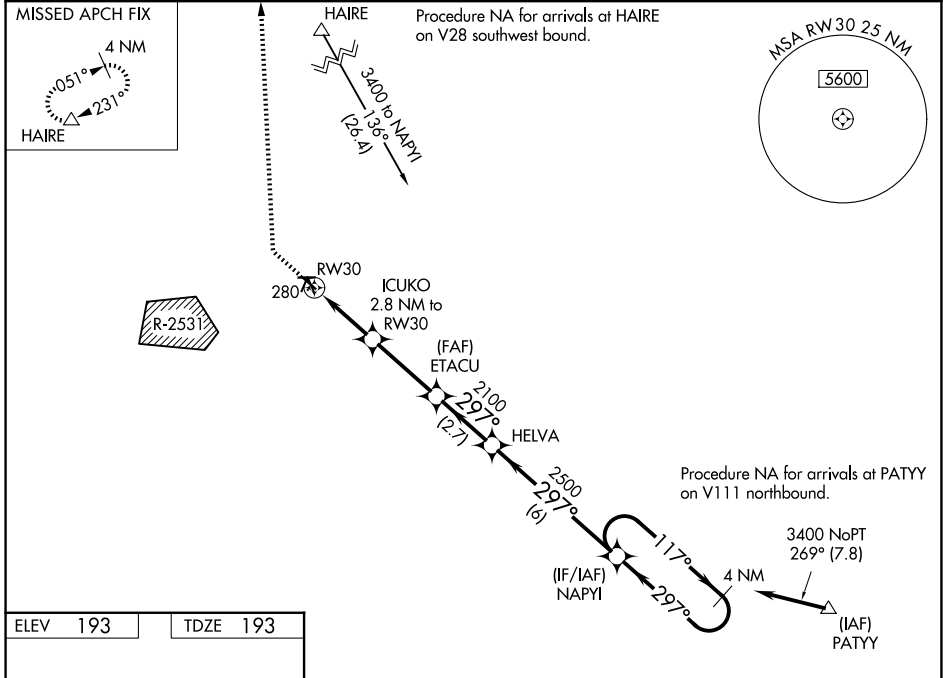
TRACY MUNI (TCY)

RNP APCH

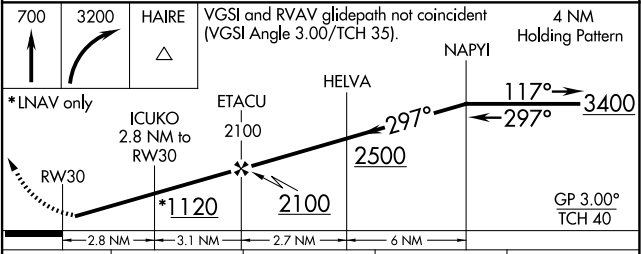
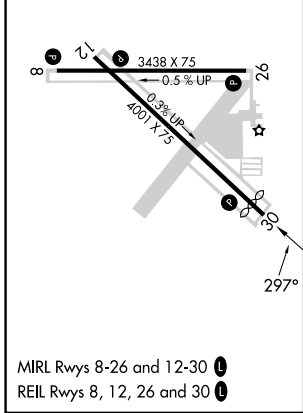
▼ Baro-VNAV NA when using Stockton altimeter setting. For uncompensated Baro-VNAV systems, LNAV/VNAV NA below -15°C or above 54°C. Circling NA southwest of Rwy 12-30. Straight-In Rwy 30 NA at night, Circling Rwy 30 NA at night. Rwy 30 helicopter visibility reduction below 1 SM NA. When local altimeter setting not received, use Stockton altimeter setting; increase all DAs to 507 feet; increase all MDAs 60 feet and visibility LNAV Cat C 1/8 SM.

MISSED APPROACH: Climb to 700 then climbing right turn to 3200 direct HAIRE and hold, continue climb-in-hold to 3200.

AWOS-3 118.375	NORCAL APP CON 123.85 278.3	UNICOM 123.075 (CTAF)
--------------------------	---------------------------------------	---------------------------------



ELEV 193	TDZE 193
----------	----------



	A	B	C	D
CATEGORY				
LPV DA		447-1 254 (300-1)		NA
LNAV/VNAV DA		443-1 250 (300-1)		NA
LNAV MDA		540-1 347 (400-1)		NA
CIRCLING	580-1 387 (400-1)	660-1 467 (500-1)	660-1½ 467 (500-1½)	NA

SW-2, 14 MAY 2026 to 11 JUN 2026

SW-2, 14 MAY 2026 to 11 JUN 2026