

VOR/DME MOD <b>114.6</b> Chan <b>93</b>	APP CRS <b>263°</b>	Rwy Ldg TDZE <b>186</b> Apt Elev <b>193</b>	<b>3438</b>
---	------------------------	---	-------------

# VOR RWY 26

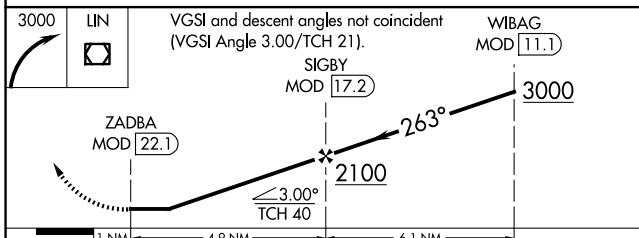
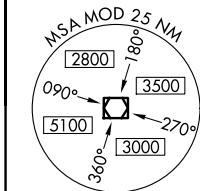
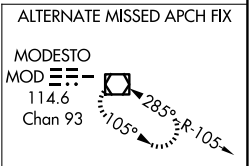
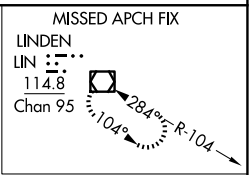
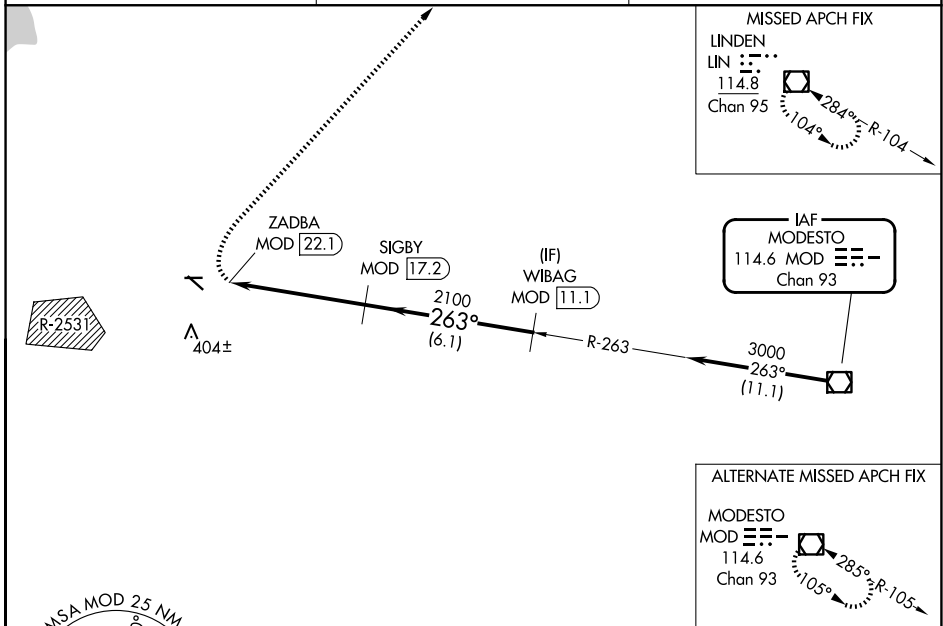
TRACY MUNI (TCY)

DME required.

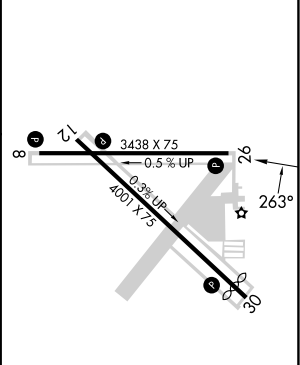
⚠ Circling NA southwest of Rwy 12-30. Circling Rwy 30 NA at night. Rwy 26 helicopter visibility reduction below 3/4 SM NA. When local altimeter setting not received, use Stockton altimeter setting: increase all MDAs 60 feet and visibility Cat C 1/2 SM.

MISSED APPROACH:  
Climbing right turn to 3000  
direct LIN VOR/DME and hold.

AWOS-3 <b>118.375</b>	NORCAL APP CON <b>123.85 278.3</b>	UNICOM <b>123.075 (CTAF) 0</b>
--------------------------	---------------------------------------	-----------------------------------



ELEV 193	TDZE 186
----------	----------



CATEGORY	A	B	C	D
S-26	760-1 1/4	574 (600-1 1/4)	760-1 5/8 574 (600-1 1/2)	NA
CIRCLING	760-1 1/4	567 (600-1 1/4)	760-1 5/8 567 (600-1 1/2)	NA

MIRL Rwy 8-26 and 12-30  
REIL Rwy 8, 12, 26 and 30

SW-2, 14 MAY 2026 to 11 JUN 2026

SW-2, 14 MAY 2026 to 11 JUN 2026