

APP CRS	Rwy Ldg	<b>4699</b>
<b>052°</b>	TDZE	<b>434</b>
	Apt Elev	<b>434</b>

# RNAV (GPS) RWY 5

SARATOGA COUNTY (5B2)

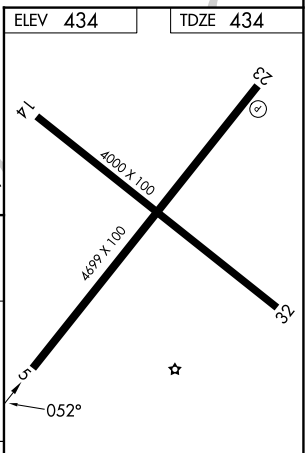
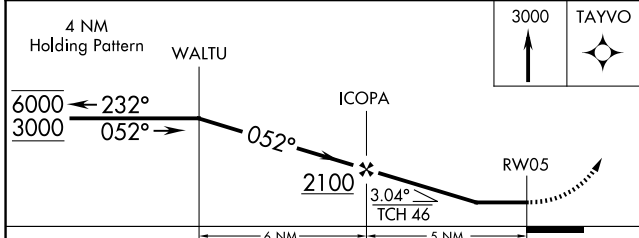
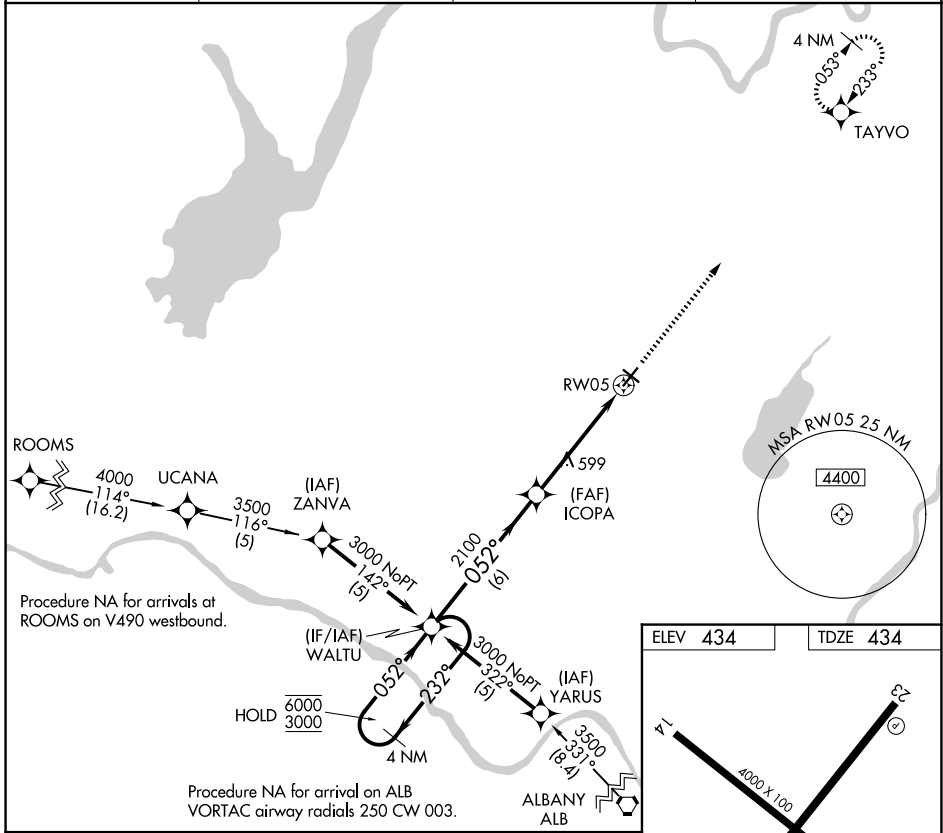
RNP APCH.

**▽** Procedure NA at night. Rwy 5 helicopter visibility reduction below 1 SM NA.

**▲** NA When local altimeter setting not received, use Albany altimeter setting and increase all MDAs 80 feet and LNAV Cat C/D visibilities 1/8 SM.

MISSED APPROACH: Climb to 3000 direct TAYVO and hold.

AWOS-3 <b>132.025</b>	ALBANY APP CON <b>118.05 263.075</b>	GCO <b>118.125</b>	UNICOM <b>123.075 (CTAF) 0</b>
--------------------------	---	-----------------------	-----------------------------------



CATEGORY	A	B	C	D
LNAV MDA	860-1	426 (500-1)	860-1¼	426 (500-1¼)

MIRL Rwy 5-23 0

MIRL Rwy 14-32

REIL Rwy 5 and 23 0

NE-2, 14 MAY 2026 to 11 JUN 2026

NE-2, 14 MAY 2026 to 11 JUN 2026