

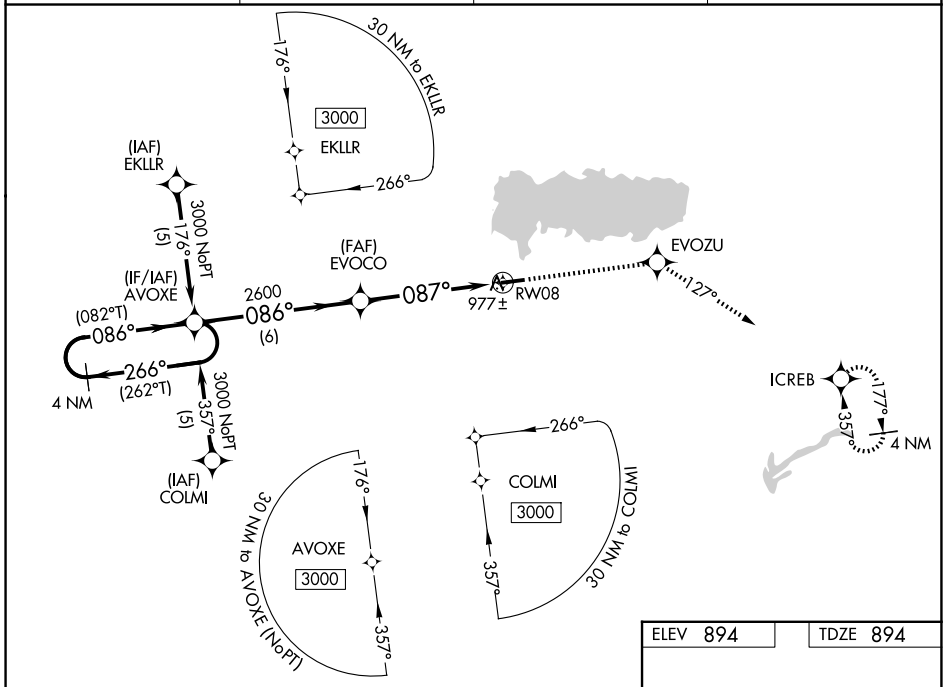
WAAS CH 61116 W08A	APP CRS 087°	Rwy Ldg 4400
		TDZE 894
		Apt Elev 894

RNAV (GPS) RWY 8

LAKEFIELD (CQA)

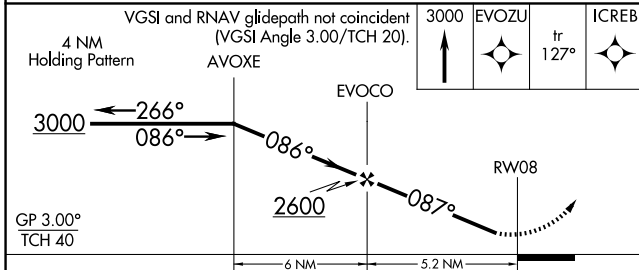
RNP APCH - GPS.	MISSED APPROACH: Climb to 3000 direct EVOZU and on track 127° to ICREB and hold.
<p>▼ Helicopter visibility reduction below 3/4 SM NA. Baro-VNAV NA. Use AXV altimeter setting.</p> <p>▲ NA When not received use DAY altimeter setting and increase LPV DA to 1293 and all Cats visibility 1/2 SM, increase LNAV/VNAV DA to 1350 and all Cats visibility 1/2 SM, increase all MDAs 80 feet and visibility Cat C 1/4 SM.</p>	

AXV AWOS-3PT 128.325	COLUMBUS APP CON 134.45 352.05	UNICOM 122.8 (CTAF)	123.3 0
--------------------------------	--	-------------------------------	----------------



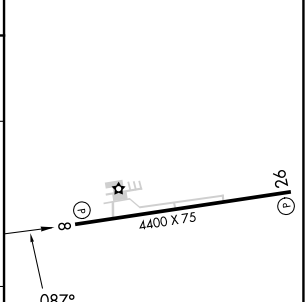
EC-2, 14 MAY 2026 to 11 JUN 2026

EC-2, 14 MAY 2026 to 11 JUN 2026



ELEV 894	TDZE 894
----------	----------

CATEGORY	A	B	C	D
LPV DA	1221-1¼	327 (400-1¼)		NA
LNAV/VNAV DA	1278-1¼	384 (400-1¼)		NA
LNAV MDA	1440-1	546 (600-1)	1440-1½ 546 (600-1½)	NA
CIRCLING	1440-1	546 (600-1)	1520-1¾ 626 (700-1¾)	NA



REIL Rwy 8 and 26 0
MIRL Rwy 8-26 0