

VORTAC PSX 117.3 Chan 120	APP CRS 054°	Rwy Ldg TDZE Apt Elev	N/A N/A 45
---	------------------------	-----------------------------	---------------------------------------

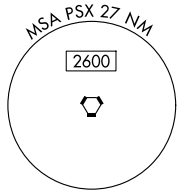
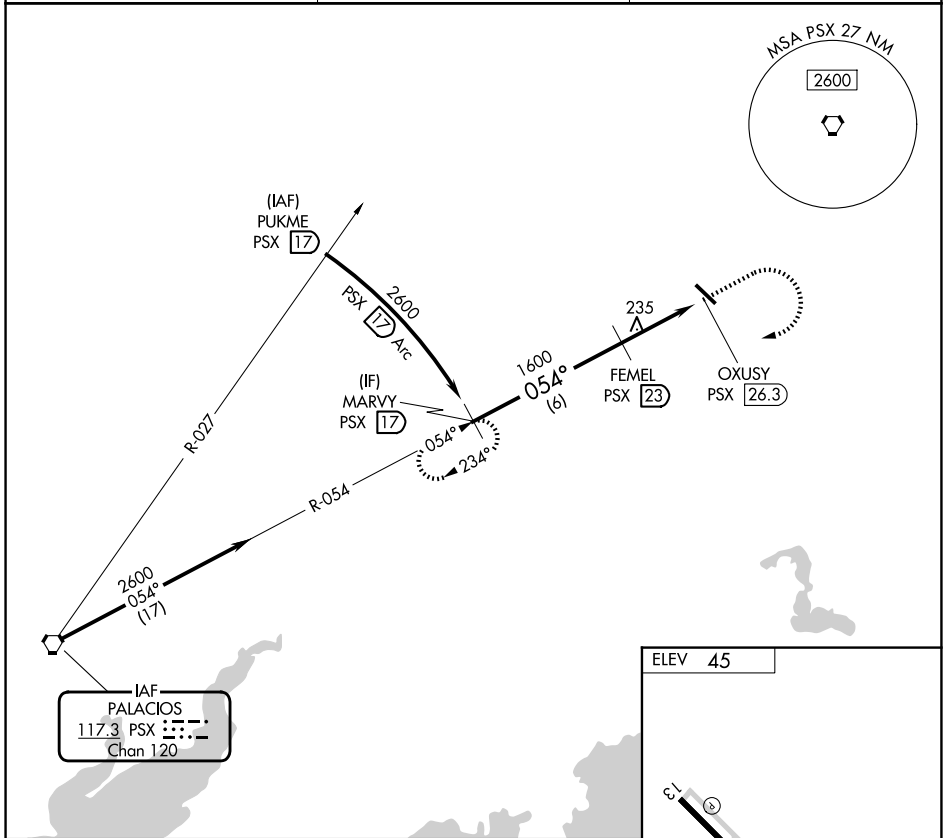
VOR-A

BAY CITY RGNL (BYT)

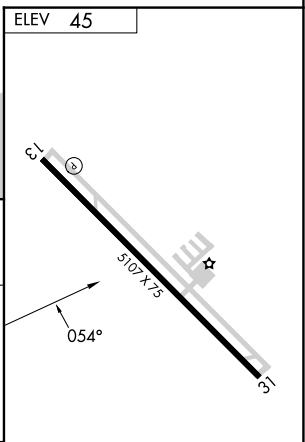
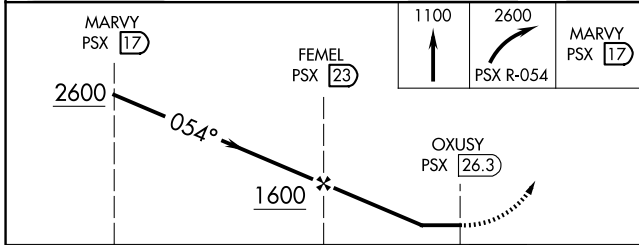
▼ Rwy 13, 31 helicopter visibility reduction below 1 SM NA.
▲ DME required. When local altimeter setting not received, use Palacios altimeter setting and increase all MDA 80 feet.

MISSED APPROACH: Climb to 1100 then climbing right turn to 2600 on PSX VORTAC R-054 to MARYV/17 DME and hold.

AWOS-3PT 118.075	HOUSTON CENTER 128.6 360.8	UNICOM 122.8 (CTAF) ①
----------------------------	--------------------------------------	--



IAF
PALACIOS
117.3 PSX
Chan 120



CATEGORY	A	B	C	D
CIRCLING	1080-1¼ 1035 (1100-1¼)	1080-1½ 1035 (1100-1½)	1080-3 1035 (1100-3)	NA

REIL Rwy 13 and 31 **①**
 MIRL Rwy 13-31 **①**

SC-5, 14 MAY 2026 to 11 JUN 2026

SC-5, 14 MAY 2026 to 11 JUN 2026