

WYLSN EIGHT DEPARTURE (RNAV)

HOUSTON DEP CON
128.6 360.85

NOTE: RADAR required.
NOTE: DME/DME/IRU or GPS required.
NOTE: RNAV 1.

TAKEOFF MINIMUMS

Rwy 13, 31: Standard with minimum
climb of 500' per NM to 560.

DEPARTURE ROUTE DESCRIPTION

TAKEOFF RUNWAY 13: Climb on heading 131° to 560 for RADAR vectors to WYLSN, thence. . . .

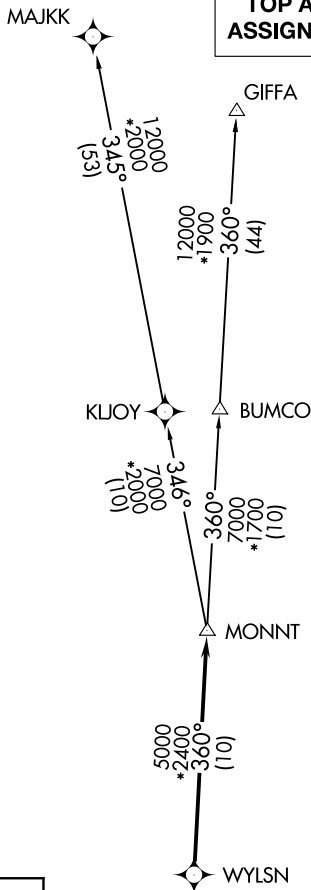
TAKEOFF RUNWAY 31: Climb on heading 311° to 560 for RADAR vectors to WYLSN, thence. . . .

. . . .on track 360° to MONNT, then on (transition).
Maintain ATC assigned altitude. Expect filed altitude
10 minutes after departure.

GIFFA TRANSITION (WYLSN8.GIFFA)

MAJJK TRANSITION (WYLSN8.MAJJK)

NOTE: Chart not to scale.



**TOP ALTITUDE:
ASSIGNED BY ATC**

SC-5, 14 MAY 2026 to 11 JUN 2026

SC-5, 14 MAY 2026 to 11 JUN 2026

WYLSN EIGHT DEPARTURE (RNAV)