

|  |                        |   |
|--|------------------------|---|
| WAAS<br>CH <b>61303</b><br><b>W27A</b> | APP CRS<br><b>272°</b> | Rwy Ldg <b>3395</b><br>TDZE <b>617</b><br>Apt Elev <b>620</b> |
|--|------------------------|---|

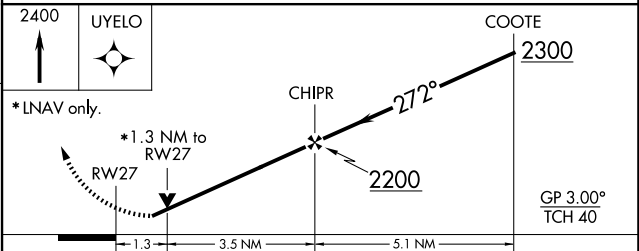
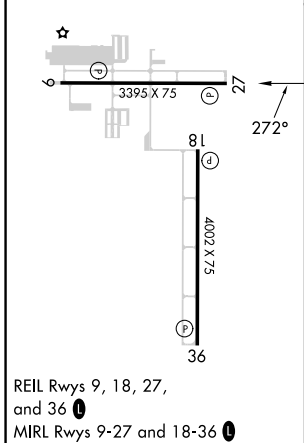
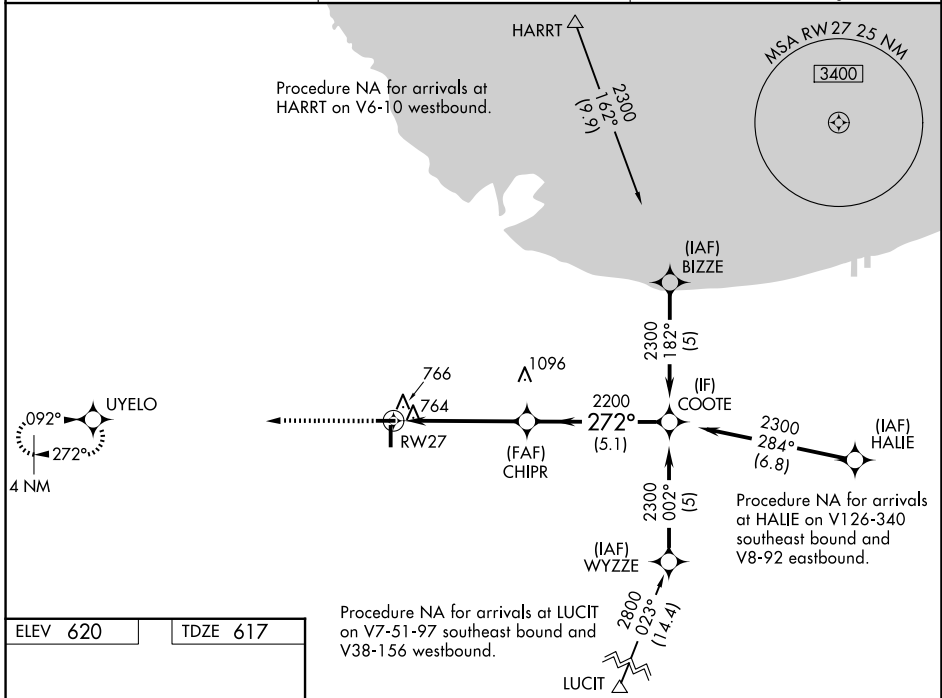
# RNAV (GPS) RWY 27

LANSING MUNI (IGQ)

**▼** **▲** Baro-VNAV NA when using Chicago Midway Intl altimeter setting. For uncompensated Baro-VNAV systems, LNAV/VNAV NA below -16°C (4°F) or above 54°C (130°F). Rwy 27 helicopter visibility reduction below ¾ SM NA. DME/DME RNP-0.3 NA. VDP NA when using Chicago Midway Intl altimeter setting. When local altimeter setting not received, use Chicago Midway Intl altimeter setting: increase LPV DA to 1058 and LNAV/VNAV DA to 1114 and all MDA 60 feet. Circling Rwy 9 NA at night.

MISSED APPROACH: Climb to 2400 direct UYELO and hold.

|                            |                                       |                                 |
|----------------------------|---------------------------------------|---------------------------------|
| AWOS-3PT<br><b>124.925</b> | CHICAGO APP CON<br><b>128.2 285.6</b> | UNICOM<br><b>122.7 (CTAF) 0</b> |
|----------------------------|---------------------------------------|---------------------------------|



| CATEGORY     | A       | B            | C | D  |
|--------------|---------|--------------|---|----|
| LPV DA       | 1016-1½ | 399 (400-1½) |   | NA |
| LNAV/VNAV DA | 1072-1¾ | 455 (500-1¾) |   | NA |
| LNAV MDA     | 1080-1  | 463 (500-1)  |   | NA |
| CIRCLING     | 1140-1  | 520 (600-1)  |   | NA |