

APP CRS <b>002°</b>	Rwy Ldg <b>4002</b>
	TDZE <b>620</b>
	Apt Elev <b>620</b>

# RNAV (GPS) RWY 36

LANSING MUNI (IGQ)

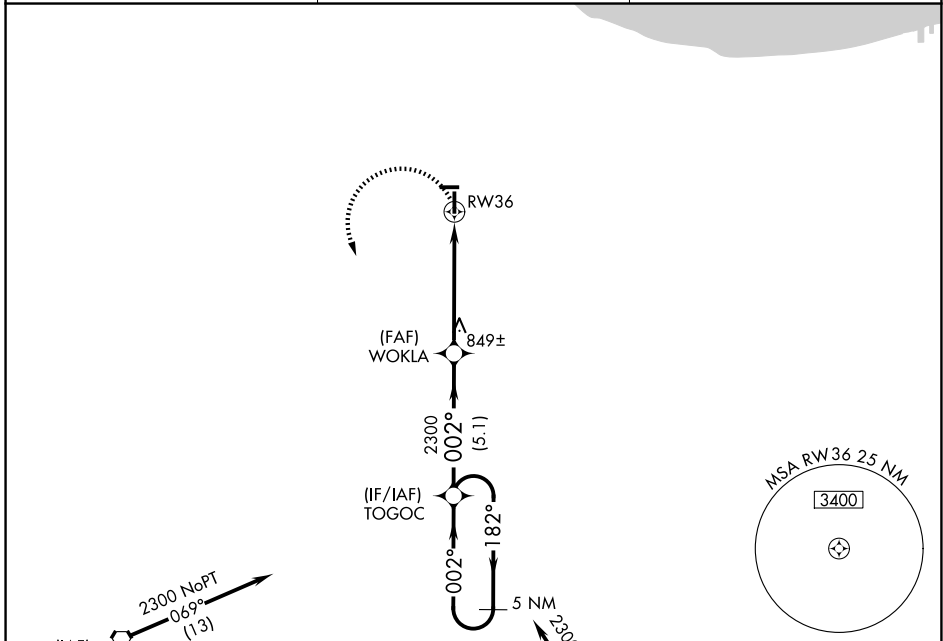
**⚠** DME/DME RNP-0.3 NA. VDP NA when using Chicago Midway Intl altimeter setting. Circling Rwy 9 NA at night. When local altimeter setting not received, use Chicago Midway Intl altimeter setting and increase all MDAs 60 feet.

**MISSED APPROACH:**  
Climbing left turn to 2300 direct TOGOC and hold.

AWOS-3PT  
**124.925**

CHICAGO APP CON  
**128.2 285.6**

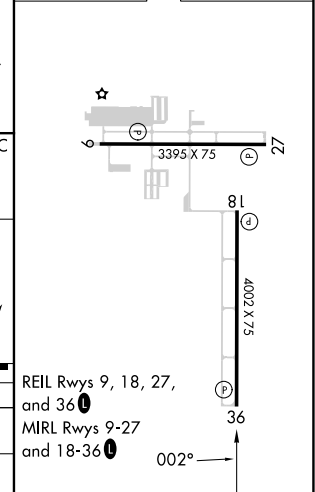
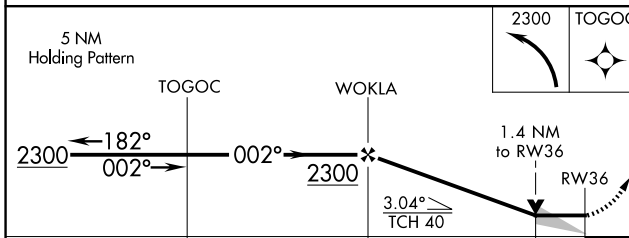
UNICOM  
**122.7 (CTAF) 0**



Procedure NA for arrival on EON VORTAC airway radials 096 CW 150.

Procedure NA for arrivals at LUCIT on V7-51-97 southeast bound and V38-156 eastbound.

ELEV 620	TDZE 620
----------	----------



CATEGORY	A	B	C	D
LNNAV MDA	1100-1	480 (500-1)		NA
CIRCLING	1140-1	520 (600-1)		NA

REIL Rwy 9, 18, 27, and 36 **0**  
MIRL Rwy 9-27 and 18-36 **0**

EC-3, 14 MAY 2026 to 11 JUN 2026

EC-3, 14 MAY 2026 to 11 JUN 2026