

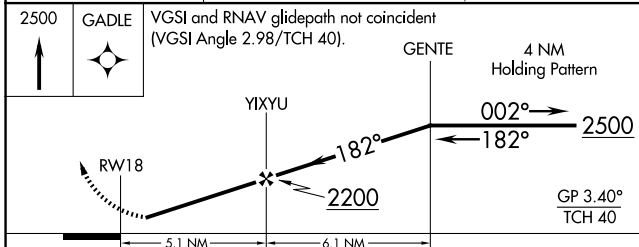
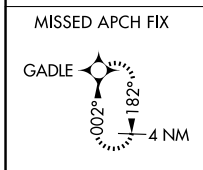
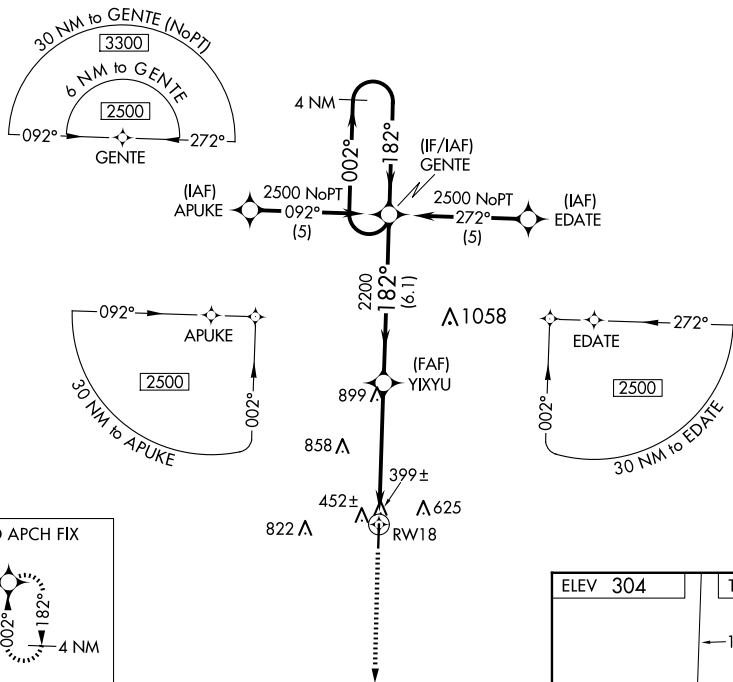
WAAS CH <b>62808</b> <b>W18A</b>	APP CRS <b>182°</b>	Rwy Idg TDZE Apt Elev	<b>5000</b> <b>304</b> <b>304</b>
--	------------------------	-----------------------------	---

# RNAV (GPS) RWY 18

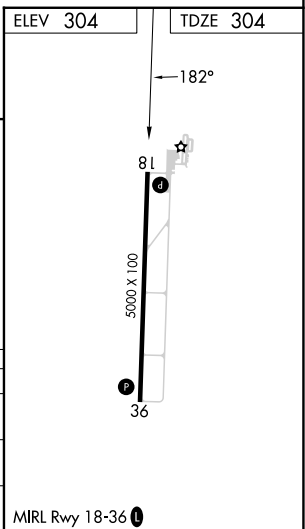
DEXTER MUNI (DXE)

RNP APCH.	<p><b>MISSED APPROACH:</b> Climb to 2500 direct GADLE and hold.</p>
<p><b>▼</b> Baro-VNAV NA. Use Poplar Bluff altimeter setting, when not received use Cape Girardeau Rgnl altimeter setting and increase all DA 33 feet and LPV visibilities ¼ mile all Cats and increase all MDA 40 feet. Rwy 18 helicopter visibility reduction below ¾ SM NA.</p>	

POF ASOS <b>124.225</b>	MEMPHIS CENTER <b>133.65 292.15</b>	UNICOM <b>122.7 (CTAF) 0</b>
----------------------------	--	---------------------------------



CATEGORY	A		B		C		D	
	LPV	DA	LPV	DA	LPV	DA	LPV	DA
LPV	DA	724-1¼	420	(500-1¼)				NA
LNAY/VNAV	DA	854-1¾	550	(600-1¾)				NA
LNAY	MDA	1200-1¼	896	(900-1¼)	1200-2¾	896	(900-2¾)	NA



MIRL Rwy 18-36 0

NC-3, 14 MAY 2026 to 11 JUN 2026

NC-3, 14 MAY 2026 to 11 JUN 2026