

WAAS CH <b>70423</b> <b>W35A</b>	APP CRS <b>352°</b>	Rwy Ldg <b>4305</b> TDZE <b>1616</b> Apt Elev <b>1616</b>
--	------------------------	---

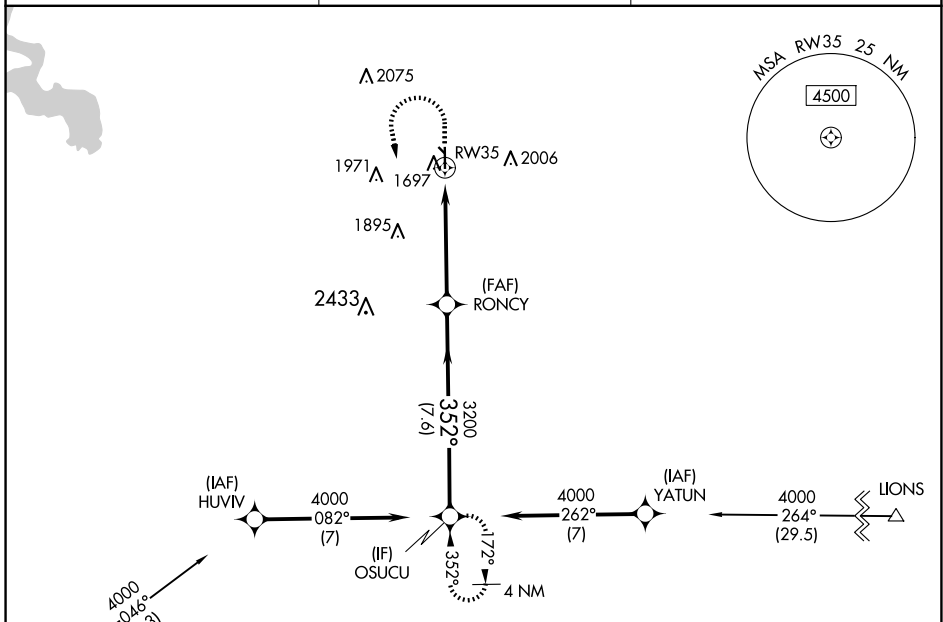
# RNAV (GPS) RWY 35

CLINTON RGNL (CLK)

**⚠** DME/DME RNP-0.3 NA. For uncompensated Baro-VNAV systems, LNAV/VNAV NA below -12°C (11°F) or above 54°C (130°F). Circling NA to Rwy 13 and 31. When local altimeter setting not received, use Weatherford altimeter setting; Increase DA to 1902 and all visibilities ½ mile; increase all MDA 40 feet and visibility Cat C ¼ mile. Baro-VNAV and VDP NA when using Weatherford altimeter setting.

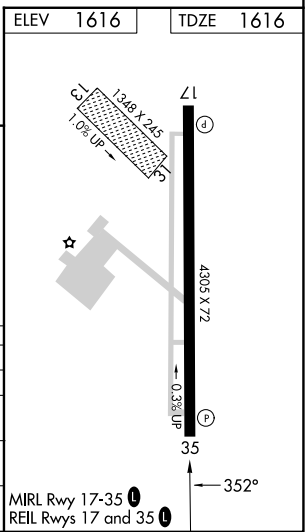
**MISSED APPROACH:** Climb to 2400 then climbing left turn to 4000 direct OSUCU and hold.

AWOS-3 <b>119.225</b>	FORT WORTH CENTER <b>128.4 269.37</b>	UNICOM <b>122.8 (CTAF) 0</b>
--------------------------	--	---------------------------------



BURNS FLAT BFV Procedure NA for arrival on BFV VORTAC airway radials 055 CW 098.

2400	4000	OSUCU	VGSi and RNAV glidepath not coincident (VGSi Angle 3.00/TCH 40).		OSUCU
*LNAV only.		*1.3 NM to RW35	RONCY	3200	4000
RW35		1.3 NM	3.6 NM	7.6 NM	GP 3.00° TCH 40
CATEGORY	A	B	C	D	
LPV DA	1866-7/8	250 (300-7/8)		NA	
LNAV/VNAV DA	1870-7/8	254 (300-7/8)		NA	
LNAV MDA	2040-1	424 (500-1)	2040-1 1/4	424 (500-1 1/4)	NA
<b>C</b> CIRCLING	2100-1	2220-1	2320-2	704 (800-2)	NA
	484 (500-1)	604 (700-1)			



SC-1, 14 MAY 2026 to 11 JUN 2026

SC-1, 14 MAY 2026 to 11 JUN 2026