

WAAS CH 58112 W05A	APP CRS 050°	Rwy Ldg TDZE 123 Apt Elev 125	5001
--	------------------------	---	-------------

RNAV (GPS) RWY 5

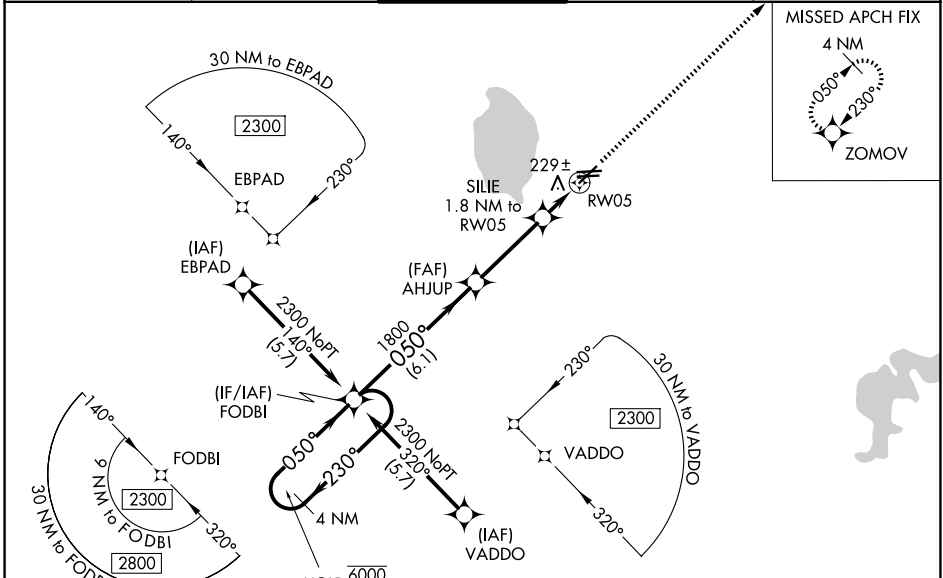
BARTOW EXEC (BOW)

RNP APCH - GPS.

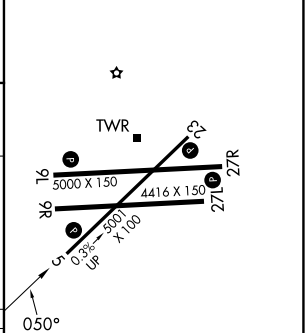
▼ Rwy 5 helicopter visibility reduction below 3/4 SM NA. Baro-VNAV and VDP NA when using TPA altimeter setting. For uncompensated Baro-VNAV systems, LNAV/VNAV NA below -15°C or above 54°C. When local altimeter setting not received, use TPA altimeter setting and increase LPV DA to 556 feet, LNAV/VNAV DA to 618 feet and LNAV MDA 120 feet. Increase LPV and LNAV/VNAV all Cats visibility and LNAV Cat C/D visibility 1/4 SM.

MISSED APPROACH:
Climb to 2300 direct
ZOMOV and hold.

AWOS-3 123.775	TAMPA APP CON 120.65 290.3	BARTOW TOWER ★ 121.20 (CTAF)	GND CON 121.9	UNICOM 122.95
--------------------------	--------------------------------------	---	-------------------------	-------------------------



ELEV 125	TDZE 123
----------	----------



VGSI and RNAV glidepath not coincident (VGSI Angle 3.50/TCH 51). ZOMOV

6000	2300	1800	740
← 230°	→ 050°	→ 050°	→ 050°
GP 3.00°	TCH 51		
6.1 NM	3.3 NM	0.9 NM	1 NM

CATEGORY	A	B	C	D
LPV DA	447-1		324 (400-1)	
LNAV/VNAV DA	509-1 1/8		386 (400-1 1/8)	
LNAV MDA	520-1	397 (400-1)	520-1 1/8	397 (400-1 1/8)

MIRL Rwy 5-23 and 9L-27R
REIL Rwy 5, 23, 9L and 27R

SE-3, 14 MAY 2026 to 11 JUN 2026

SE-3, 14 MAY 2026 to 11 JUN 2026