

WAAS CH 61234 W23A	APP CRS 232°	Rwy Ldg TDZE 1523 Apt Elev 1545
--	------------------------	---

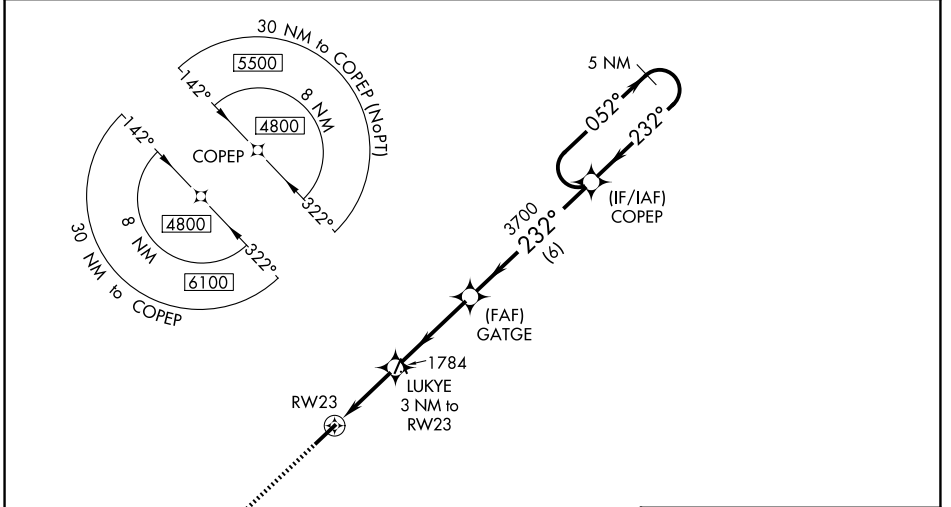
RNAV (GPS) RWY 23

SCOTT MUNI (SCX)

⚠️ NA Night landing: Rwy 5 NA. For uncompensated Baro-VNAV systems, LNAV/VNAV NA below -18°C (0°F) or above 54°C (130°F). DME/DME RNP-0.3 NA. When local altimeter setting not received, use Monticello altimeter setting: increase LPV all Cats DA to 2005 feet, LNAV/VNAV all Cats DA to 2153 feet, LPV visibility ½ mile, LNAV/VNAV ⅜ mile; increase all MDA 240 feet and LNAV Cat C/D visibility ⅜ mile, Circling Cat B ¼ mile, Circling Cat C 1 mile and Circling Cat D ¾ mile. Inop table does not apply to LPV and LNAV all Cats. For inop ODALS, increase LNAV/VNAV Cat D visibility to 1 ⅜ mile. For inop ODALS when using Monticello altimeter setting, increase LPV all Cats visibility to 1 ⅜ mile, LNAV/VNAV all Cats to 2 ½ mile. When using Monticello altimeter setting, inop table does not apply to LNAV Cats A/C/D. VDP and Baro-VNAV NA when using Monticello altimeter setting.

ODALS MISSED APPROACH: Climb to 3900 direct ZITGO and hold.

AWOS-3 135.025	INDIANAPOLIS CENTER 124.625 371.925	UNICOM 122.8 (CTAF)
--------------------------	---	-------------------------------

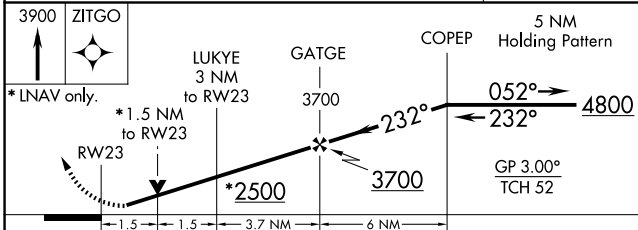


SE-1, 14 MAY 2026 to 11 JUN 2026

SE-1, 14 MAY 2026 to 11 JUN 2026

MISSED APCH FIX ZITGO	ELEV 1545	TDZE 1523
--------------------------	------------------	------------------

051° 231° 4 NM



CATEGORY	A	B	C	D
LPV DA		1773-1	250 (300-1)	
LNAV/ VNAV DA		1921-1 ⅜	398 (400-1 ⅜)	
LNAV MDA	2040-1	517 (500-1)	2040-1 ⅜	517 (500-1 ⅜)
CIRCLING	2040-1	495 (500-1)	2200-1 ¾	2260-2 ¼
			655 (700-1 ¾)	715 (800-2 ¼)

