

WAAS CH 49035 W27A	APP CRS 273°	Rwy Ldg TDZE Apt Elev	3499 1198 1198
--	------------------------	-----------------------------	---

RNAV (GPS) RWY 27

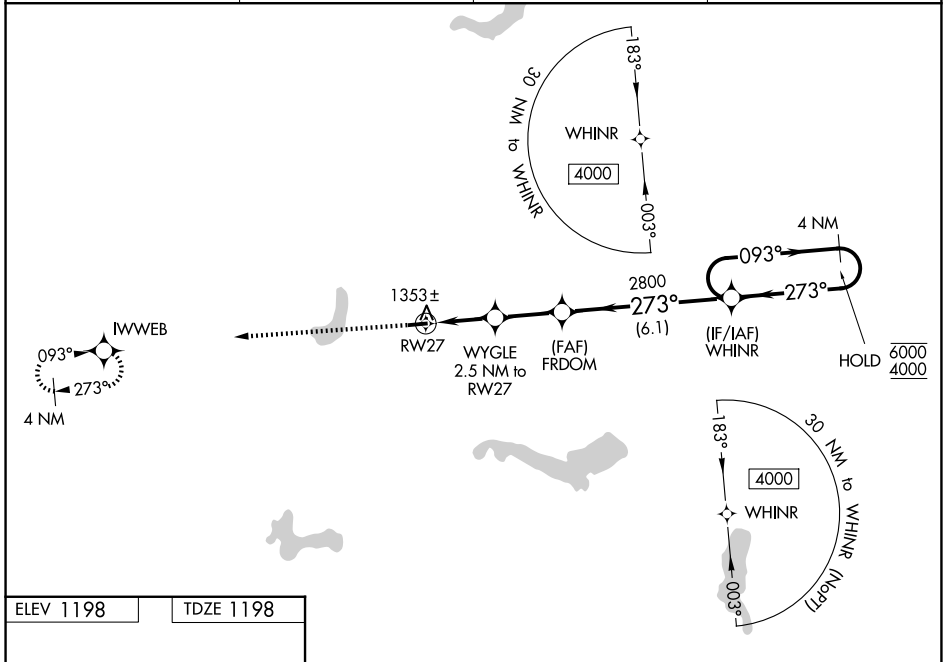
PORTAGE COUNTY (POV)

RNP APCH - GPS.

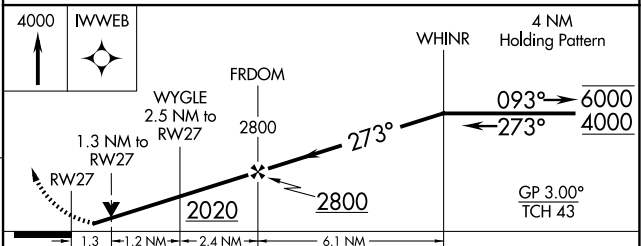
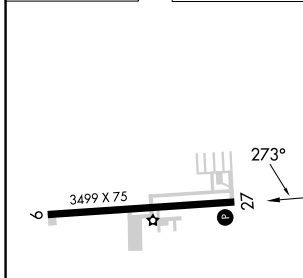
⚠ Baro-VNAV and VDP NA when using CAK altimeter setting. For uncompensated Baro-VNAV systems, LNAV/VNAV NA below -17°C or above 54°C. Rwy 27 helicopter visibility reduction below 3/4 SM NA. When local altimeter setting not received, use CAK altimeter setting and increase LPV DA to 1546 feet. Increase LNAV/VNAV DA to 1603 feet and all visibilities 1/2 SM. Increase all MDAs 60 feet; and Circling visibility Cat C 1/2 SM.

MISSED APPROACH:
Climb to 4000 direct IWWEB and hold, continue climb-in-hold to 4000.

AWOS-3 118.675	CLEVELAND APP CON* 125.5 371.875	CLNC DEL 125.65	UNICOM 123.05 (CTAF) 0
--------------------------	--	---------------------------	----------------------------------



ELEV 1198	TDZE 1198
-----------	-----------



CATEGORY	A	B	C	D
LPV DA		1496-1 298 (300-1)		NA
LNAV/VNAV DA		1553-1 355 (400-1)		NA
LNAV MDA	1640-1	442 (500-1)	1640-1 3/8 442 (500-1 3/8)	NA
CIRCLING	1740-1 542 (600-1)	1800-1 602 (700-1)	1860-1 3/4 662 (700-1 3/4)	NA

REIL Rwy 9 and 27 **0**
MIRL Rwy 9-27 **0**

EC-2, 14 MAY 2026 to 11 JUN 2026

EC-2, 14 MAY 2026 to 11 JUN 2026