

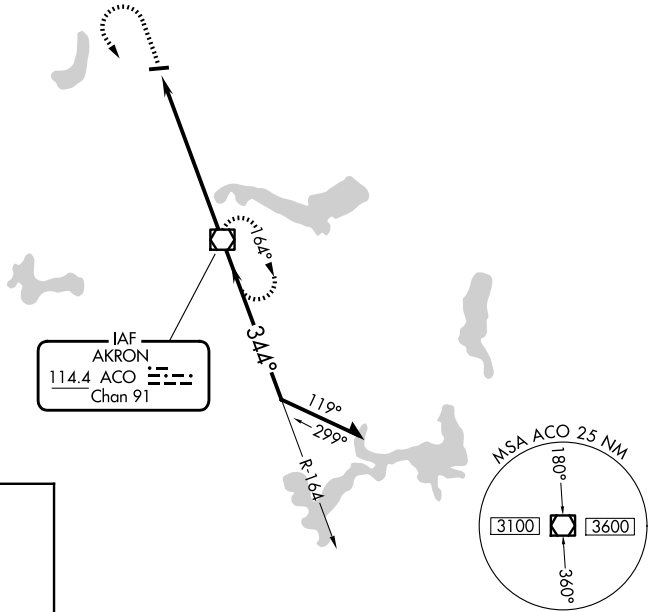
VOR/DME ACO 114.4 Chan 91	APP CRS 344°	Rwy Ldg TDZE Apt Elev N/A 1198
---	------------------------	---

VOR-A
PORTAGE COUNTY (POV)

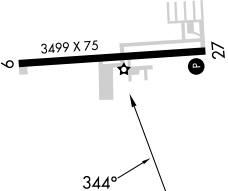
⚠ When local altimeter setting not received, use CAK altimeter setting and increase all MDAs 60 feet and visibility Cat C ¼ SM.

MISSED APPROACH: Climb to 2900 then left turn direct ACO VOR/DME and hold.

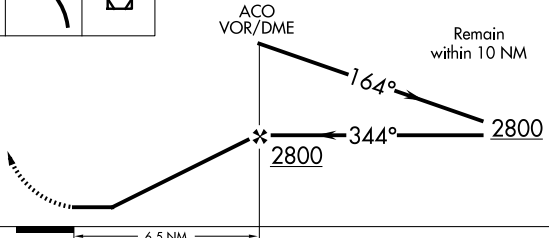
AWOS-3 118.675	CLEVELAND APP CON★ 125.5 371.875	CLNC DEL 125.65	UNICOM 123.05 (CTAF) Ⓛ
--------------------------	--	---------------------------	---



ELEV 1198



REIL Rwy 9 and 27 **Ⓛ**
MIRL Rwy 9-27 **Ⓛ**



FAF to MAP 6.5 NM						CATEGORY	A	B	C	D
Knots	60	90	120	150	180	CIRCLING	1740-1 542 (600-1)	1800-1 602 (700-1)	1860-1¾ 662 (700-1¾)	NA
Min:Sec	6:30	4:20	3:15	2:36	2:10					