

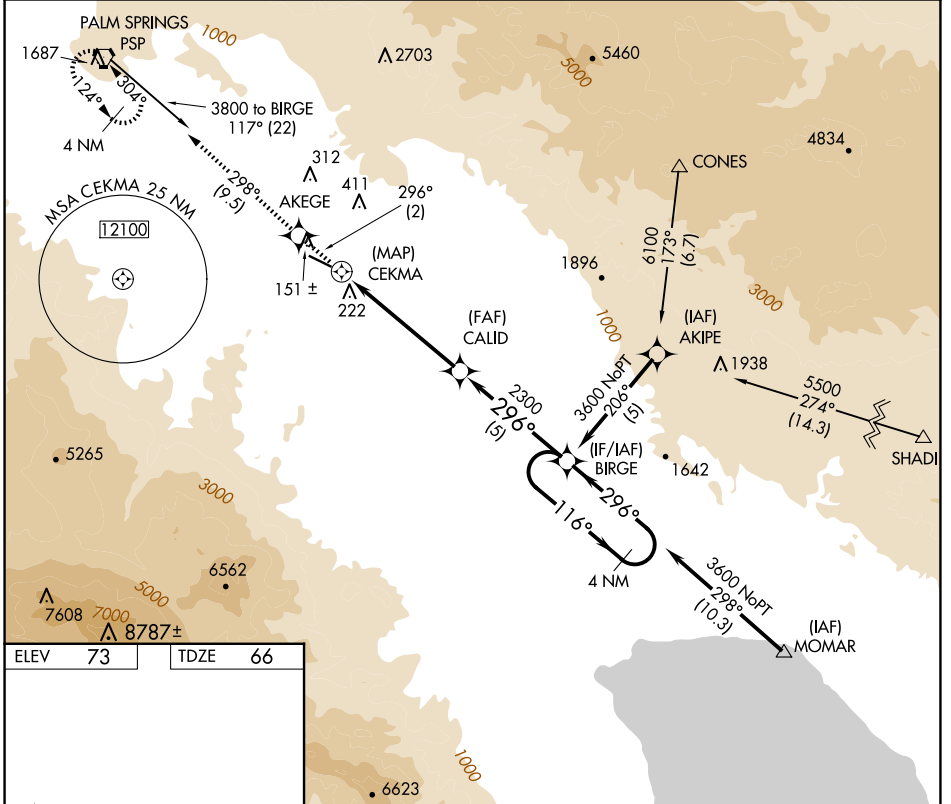
APP CRS	Rwy Ldg	4702
296°	TDZE	66
	Apt Elev	73

RNAV (GPS) RWY 28

BERMUDA DUNES (UDD)

RNP APCH.	MISSED APPROACH: Climb to 3300 via course 296° to AKEGE WP then right turn via course 298° to PSP VORTAC and hold.
<p>▼ Use Jacqueline Cochran Rgnl altimeter setting. Rwy 28 Straight-in and Circling minimums NA at night. Rwy 28 helicopter visibility reduction below 1 SM NA.</p> <p>▲ NA</p>	

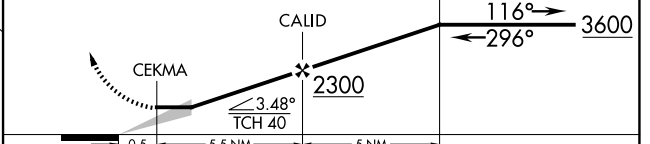
TRM ASOS 118.325	SOCAL APP CON * 135.275 251.1	UNICOM 122.8 (CTAF) 0
----------------------------	---	---------------------------------



ELEV 73	TDZE 66
---------	---------

REIL Rwy 28
MIRL Rwy 10-28 0

3300	AKEGE	PSP	VGSI and descent angles not coincident (VGSI Angle 3.00/TCH 33).
crs 296°		crs 298°	
			4 NM Holding Pattern



CATEGORY	A	B	C	D
LNAV MDA	1020-1¼ 954 (1000-1¼)	1020-1½ 954 (1000-1½)	1020-3 954 (1000-3)	NA
CIRCLING	1020-1¼ 947 (1000-1¼)	1020-1½ 947 (1000-1½)	1100-3 1027 (1100-3)	NA

SW-3, 14 MAY 2026 to 11 JUN 2026

SW-3, 14 MAY 2026 to 11 JUN 2026