

APP CRS	Rwy Idg	<b>6001</b>
<b>331°</b>	TDZE	<b>121</b>
	Apt Elev	<b>121</b>

# RNAV (GPS) RWY 33

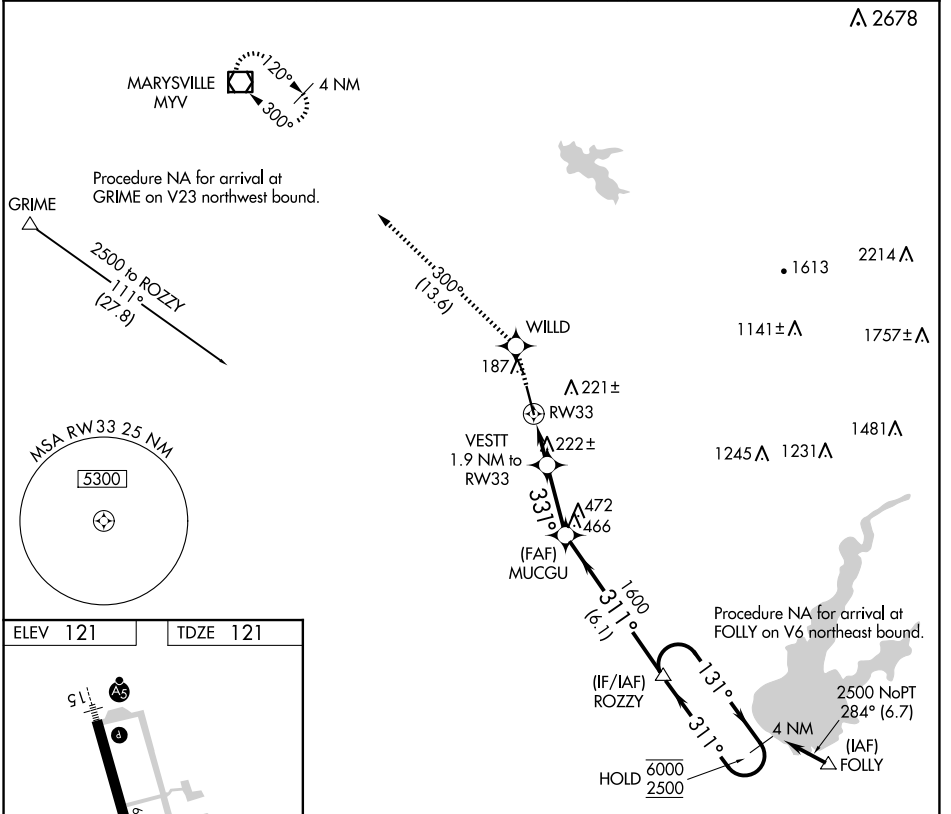
LINCOLN RGNL/KARL HARDER FLD (LHM)

RNP APCH.

**⚠** Rwy 33 helicopter visibility reduction below 3/4 SM NA. When local altimeter setting not received, use Beale AFB altimeter setting and increase all MDA 40 feet, and increase LNAV Cat C/D visibility 1/8 mile. VDP NA with Beale AFB altimeter setting.

MISSED APPROACH: Climb to 2000 direct WILLD and on track 300° to MYV VOR/DME and hold.

AWOS-3 <b>124.25</b>	NORCAL APP CON <b>125.4 259.1</b>	UNICOM <b>123.0 (CTAF) 0</b>
-------------------------	--------------------------------------	---------------------------------



SW-2, 14 MAY 2026 to 11 JUN 2026

SW-2, 14 MAY 2026 to 11 JUN 2026

