

BARMY SIX DEPARTURE (RNAV)

SE-2, 14 MAY 2026 to 11 JUN 2026

CHARLOTTE DEP CON
120.05 307.8
AWOS-3
120.825
GCO
121.725

RNAV 1 - DME/DME/IRU or GPS.
RADAR required.

TOP ALTITUDE:
3000



RALEIGH/DURHAM
RDU

TAR RIVER
TYI

FL180
080°
*3300

(17)
070°
*3400

084°
FL180
*3400

(70)

FL180
048°
*2300

(22)

FL180
077°
*1900

(39)

10400
077°
*2100

(13)

088°
(18)

GULFY

BARMY

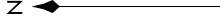
BATTA

EBOOK

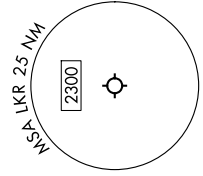
NUTIZE

DATTO

NOTE: Turbojet only.
NOTE: If unable to accept climb rates, advise ATC on initial contact.
NOTE: Transponder code will be issued via PDC or Charlotte CLNC DEL.
NOTE: Upon reaching 10000 MSL, accelerate to and maintain 280K, if unable advise ATC.



TAKEOFF MINIMUMS
Rwys 6, 24: Standard.



NOTE: Chart not to scale.

DEPARTURE ROUTE DESCRIPTION

Climb on heading assigned by ATC on RADAR vectors to MESHY, then on depicted route to BARMY. Then on assigned transition. Maintain 3000, expect filed altitude 10 minutes after departure.

- NUTIZE TRANSITION (BARMY6.NUTIZE)
- RALEIGH/DURHAM TRANSITION (BARMY6.RDU)
- TAR RIVER TRANSITION (BARMY6.TYI)

BARMY SIX DEPARTURE (RNAV)

SE-2, 14 MAY 2026 to 11 JUN 2026