

(ESTRR6.ESTRR) 26134

ESTRR SIX DEPARTURE (RNAV)

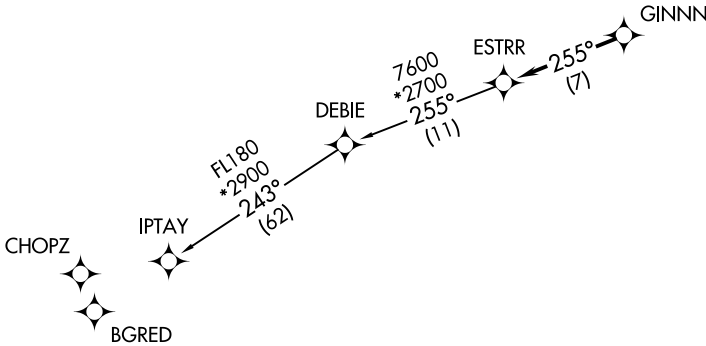
LANCASTER COUNTY-MC WHIRTER FLD (LKR)
LANCASTER, SOUTH CAROLINA
AL-5853 (FAA)

CHARLOTTE DEP CON
120.05 307.8
AWOS-3
120.825
GCO
121.725

RNAV 1 - DME/DME/IRU or GPS.

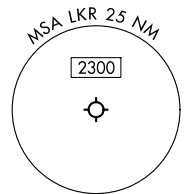
RADAR required.

**TOP ALTITUDE:
3000**



TAKEOFF MINIMUMS
Rwys 6, 24: Standard.

- NOTE: Turbojet only.
- NOTE: If unable to accept climb rates, advise ATC on initial contact.
- NOTE: Transponder code will be issued via PDC or CLT CLNC DEL.
- NOTE: Upon reaching 10000 MSL, accelerate to and maintain 280K, if unable advise ATC.



NOTE: Chart not to scale.



DEPARTURE ROUTE DESCRIPTION

Climb on heading assigned by ATC for RADAR vectors to GINNN, then on track 255° to ESTRR, then on IPTAY Transition. Maintain 3000, expect filed altitude 10 minutes after departure.

IPTAY TRANSITION (ESTRR6.IPTAY)

ESTRR SIX DEPARTURE (RNAV)
(ESTRR6.ESTRR) 14MAY26

LANCASTER, SOUTH CAROLINA
LANCASTER COUNTY-MC WHIRTER FLD (LKR)

SE-2, 14 MAY 2026 to 11 JUN 2026

SE-2, 14 MAY 2026 to 11 JUN 2026